



The Bugle



**A chance to blow your trumpet for the villagers of
Alport, Middleton and Youlgrave**

No. 276

June 2025

Youlgrave Waterworks imposes hosepipe ban after prolonged dry period

At the end of last month Youlgrave Waterworks announced an immediate hosepipe ban throughout the local system, following a lengthy period of dry weather.

"The lack of rain for two months has seen a drop in our reserve supply level, as the pumps are in operation for up to 5 hours a day to compensate for reduced flow from the spring," said Youlgrave Waterworks. "It will need at least two weeks of continuous rainfall to make a difference."

The statement went on: "If we need to buy in water from Severn Trent to keep the system topped up, their 38% price increase will severely dent our cashflow so we urge all who have not

yet started to pay to please do so.

Youlgrave Waterworks also confirmed that a planning application for a second header tank has been submitted. They said: "We hope to commence work once approved, but with the single tank emptying by 8am we note that those who think it OK to water the garden in the early hours are taking from the header system when it's most needed for domestic use. Please conserve water where possible and if you see damp patches or hear water flow contact us immediately as we are continuously searching for any leaks."

If you suspect a leak please call Youlgrave Waterworks on 07866 365610.

In this issue of The Bugle:

- New kit for the Bowls Club, *page 5*
- Welldressing run-down, *pages 6-7*
- Forthcoming concerts, *pages 8-9*
- Youlgrave School, *pages 12-13*
- From the Churches: *pages 14-15*
- Pommie People: Graham Elliott *pages 16-17*

For a full colour Bugle and all the back issues go to: www.youlgrave.org.uk



Middleton welldressing 2025

BAKEWELL PET SUPPLIES



Tel: 01629 814264



Bakery – Cafe – Kitchen

www.peakfeast.co.uk

Moor Lane, Youlgrave DE45 1US

01629 630000



Youlgrave Garage Ltd

Friendly Honest Reliable

Tel. 01629 636943

Service & Repairs

MOT Testing

Diagnostics

Air Conditioning

Batteries

Brakes & tyres

Exhausts

Accident Repair

E5 Super Unleaded Petrol & Diesel

Custom leather and interior service

Shop open for sale of ice creams, hot and cold drinks,
confectionery and car accessories

www.youlgravegarage.co.uk Email: youlgravegarage@gmail.com



- Supply & Fitting of all Domestic and Contract Carpets
- Supply & Fitting of Vinyl, Laminate & Karndean Flooring
- Supply & Fitting of Real Wood Flooring
- Supply & Fitting of Sisal and Natural floorings



- ❖ Guaranteed Workmanship
- ❖ Free Fitting Service
- ❖ Free Home Selection Service
- ❖ Moving & Replacement of Furniture
- ❖ Disposal of Old Carpet
- ❖ Customers' Own Car Park

43/47 High Street, Clay Cross, Chesterfield
Tel: 01246 863148



See our **WEBSITE** at: www.nutt.co.uk



VILLAGE NOTICEBOARD

Youlgrave Parish Council report

Council's annual meeting last month reappointed Graham Elliott as Chairman and Andrew McCloy as Vice-Chairman for the coming year, and representatives to the various bodies and committees that help our village thrive.

The Parish Council meeting welcomed the support for tennis in response to the recent Bugle article and it wishes to thank volunteers for carrying out the repairs to the tennis court netting to extend its life. Councillors wish the newly formed group every success in its social tennis meetings and looks forward to further engagement. Council also agreed to investigate enhancements to the CCTV system in that area of the playing fields, and is also exploring provision of a separate all-weather practice sports pitch.

Youlgrave Surgery

01629 636207

OPENING TIMES

Monday	8.30am-12 midday 2-6pm
Tuesday	8.30am-1pm
Wednesday	8.30am-1pm
Thursday	8.30am-12 midday 2-6pm
Friday	8.30am-1pm
Weekend	Closed

JOINER WANTED

Youlgrave Parish Council is seeking the services of a joiner for occasional repairs, mainly to sprung external doors and frames.

Please contact the Parish Clerk if you can provide this service:
Matthew Lovell, 01629 636151,
youlgraveclerk@youlgrave.org.uk

Bakewell Oxfam (in association with SOS Charity Fashion Shows) presents:

A Fashion Show

Friday 6th June

7.15 for a 7.30pm start

Medway Centre, Bakewell

Raffle, refreshments
Tickets £5 from the Medway
Centre or pay on the door

*Local models and lots of top
brands on show*

MOBILE LIBRARY:

Friday 6th June

3.15–3.35pm Holywell Lane
& 3.40-4pm Grove Place,
Youlgrave



Andrew McCloy (Editor), Englemere, Brookleton,
Youlgrave, Derbyshire DE45 1UT tel 01629 636125,
email bugleEd01@gmail.com

Printed by Matlock Print, Mercury House, 24 Bakewell
Road, Matlock, Derbyshire DE4 3AU (tel 01629 582766) www.matlockprint.co.uk.
The views in this publication are not necessarily those of the editorial team.

Youlgrave Bowls Club: new club strip and sponsorship



Youlgrave Bowls Club is proud to unveil its striking new club strip, a testament not only to the club's sporting spirit but also to the generous support of the local community. Recently, members gathered for this photograph, proudly donning the updated attire, which symbolises both tradition and modernity while representing the heart of the club.

The creation of this new strip was made possible thanks to the invaluable sponsorship of several local companies. Among the generous contributors are DSF Refractories, Long Rake Spar, Derbyshire Aggregates and the George Hotel. Their support has allowed the club to enhance its identity and bring a fresh look to its teams, fostering a sense of unity and pride among its members.

This collaboration between Youlgrave Bowls Club and local businesses highlights the strong community bonds that define the area. The club extends its heartfelt gratitude to the sponsors for their commitment to supporting local sports and looks forward to showcasing the new strip in upcoming matches and events. With this fresh look and strong backing, the future of Youlgrave Bowls Club shines bright.

Carol Fletcher



Father's Day Sunday Puddling for 2025 Welldressings

Puddling for Youlgrave's Welldressings will this year take place at 2pm on a Sunday afternoon, a change from the past when it mostly happened on the Monday evening. Various options were discussed at March's AGM, including doing it at the individual garages where the boards are decorated, but the Committee was keen to encourage and maintain the opportunity for family participation. It was recognised that, in 2025, this Sunday coincides with Father's Day; so what better way for children to treat dad than to bring him



Petalling for the 2024 Bank Top Welldressing (photo by Phil Smith).

down to the river at the bottom of Holywell Lane for 2pm on Sunday 15th June and get their hands dirty!

This year's Welldressing will be on display from Saturday 21st June with a service of blessing led by Youlgrave Silver Band at 2.30pm. The Band will also perform for an outdoor concert following a service at the Wesleyan Reform Chapel at 6pm on the Sunday.

As usual, you are invited to get involved in whatever way you can; each of the wells welcomes new volunteers for clay preparation, petalling, tea-making, putting up and taking down. There has also been a shout-out for new marshals on the Saturday for managing the road closure. One specific request comes from Anne Croasdell, the designer of the Holywell welldressing, who needs

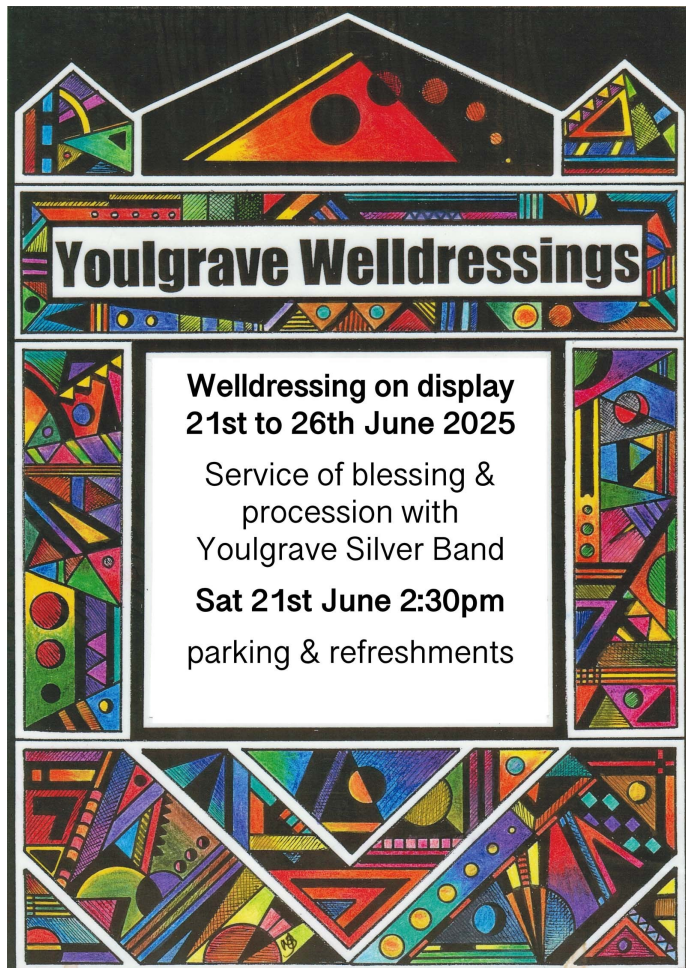
some more "muscle" early on the morning of Saturday 21st June to help move and assemble her boards. Either email Ian (address below) or turn up to puddling and make yourself known to one of the team wielding a plastering trowel.

The Welldressing Committee again expressed its appreciation for the support of DSF at Friden in the renovation of some of the ageing boards, which has helped us to preserve Welldressing funds. "We are very happy to have been able to donate £2,000 to local causes this year - £1,000 to Pommie Pilgrimage (supporting a campaign to install toilets and a kitchen facility in All Saints Church) and £1,000 to Youlgrave Youth and Community Hall", said Ian Knight, secretary of Youlgrave Welldressing Association.

To get involved with the making or other preparations contact Ian Knight at ianknight@xymail.co.uk. Also, visit www.youlgravewelldressers.co.uk or follow us on Facebook www.facebook.com/youlgravewelldressings

Welldressing timetable for 2025:

Friday 6 June:	5pm	Boards in River (meet at the Welldressings shed)
Sunday 15 June:	2pm	Puddling at bottom of Holywell Lane
Mon 16– Fri 20 June:	Various	Making of Welldressings in various garages
Saturday 21 June:	6am	Boards go up
Sat 21– Fri 27 June:		Welldressings on display
Saturday 21 June:	2-4.15pm	Road closure
Saturday 21 June:	2.30pm	Procession and Blessing of the Wells
Sunday 22 June:	6pm	Service in Wesleyan Reform Chapel followed by outdoor concert from Youlgrave Silver Band
Friday 27 June:	2pm	Boards stripped / dismantled



Marshals needed for welldressing parade

Youlgrave Welldressing Parade will take place on Saturday 21st June. We are seeking two people, ideally from the village, who would be prepared to act as marshals on the day, between 2–4.15pm.

Responsibility would include liaising with the Chief marshal on the day to ensure that the parade can move safely on the roads within the village. You will be provided with a hi-vis jacket and full instructions will be given to enable you to carry out the role.

If you would like to volunteer please contact Ken Clayton, email kenclayton@mail.com or call 01629 630005.



A summer afternoon with Abbeydale Singers

Musical Director Lucy Joy Morris

Saturday 12 July 3.00pm

All Saints Church in Youlgrave

Church Street, Youlgrave, Bakewell DE45 1WL

Tickets £10

Students and accompanied children under 18 free

Book online: www.abbeydalesingers.org.uk

or pay on the door

You are welcome to join us for tea, coffee
and cake at the end of the performance.

There will be no interval.



Wyns Tor Singers Summer Concert with violinist Charlotte Hand

Saturday 7th June, 7.30pm, All Saints Church, Youlgrave

Wyns Tor's chamber choir, the Wyns Tor Singers, invites you to a summer concert in support of the Youlgrave church appeal to help install a kitchen and toilets.

The choir will perform an exciting and varied range of contemporary choral music and folk songs from all around the British Isles. This will include favourites by Ola Gjeilo, Peter Maxwell Davies and Bob Chilcott.

Guest artist Charlotte Hand (pictured right) is a rising star in the national music scene. A native of Crich, she has played with Derbyshire Youth Orchestra, the National Youth Chamber Orchestra, and at the Last Night of the Proms. She is graduating from the Birmingham Conservatoire, and is training with the [City of Birmingham Symphony Orchestra](#). Charlotte will share some of her favourite music.



Join us for this fun evening of music. Tickets £10 from the Post Office, Village Shop or on the door.

Middleton Rocks: Saturday 7th June, 7pm

- ◆ Live music concert in The Square, Middleton-by-Youlgrave
- ◆ Free entry
- ◆ 4 live bands
- ◆ Bar
- ◆ Food stands
- ◆ Plenty of parking
- ◆ 7pm onwards



Granby House, Youlgrave

Do you feel the need for more company or support, but don't want a care home? Or do you have an elderly relative who wants to be closer to you? Granby House could be the answer.



At Granby House you can eat meals cooked by the staff, and visits from carers can be arranged if you need extra help. But Granby House is not a Care Home.

We recognise that a move to Granby House is a big step. So come and visit us and have a look around. We then offer a two week trial to ensure that Granby House is the right choice.

If you or a relative would like to consider Granby House please contact Ian Webster on 01629 636836 or speak to the housekeeper at Granby House, on 01629 636264. You can also email granbyhouse@gmail.com and look at our website www.granbyhouse.org.

BAKEWELL OSTEOPATHY CLINIC

The conditions we can help you with include:

- HEADACHES & MIGRAINES
- NECK PAIN & WHIPLASH
- FROZEN OR STIFF SHOULDERS
- TENNIS ELBOW • SLIPPED DISCS
- REPETITIVE STRAIN INJURIES
- TRAPPED NERVES • LOWER BACK PAIN
- HIP, THIGH OR KNEE PROBLEMS
- POSTURAL CHANGES DURING PREGNANCY
- CHRONIC FATIGUE SYNDROME (ME)

The clinic offers the following therapies:

OSTEOPATHY

is an effective way of treating all joint and soft tissue related problems from head to toe in people of all ages

SHOCKWAVE THERAPY

which is an advanced non-surgical and non-invasive treatment for a wide range of stubborn tendon related issues such as Plantar Fasciitis, Shoulder tendons or Tennis or Golfer's Elbow

IDD THERAPY

for degenerative discs or spinal joints which cause long term chronic pain and herniated or prolapsed or bulging discs that cause debilitating nerve pain such as sciatica.

LAZER THERAPY

is a new technique for wound healing and osteoarthritis.

CLINIC HOURS AND HOME VISTS:

Our Clinic Opening days are Tuesdays, Wednesdays and Thursdays from 9.00am to 6.30pm.

We can arrange Home Visits by special request.



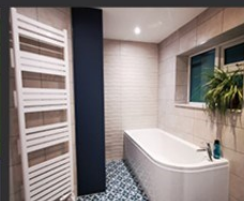
**BAKEWELL
OSTEOPATHY
CLINIC**



CALL PHIL HELER:
01298 214994 | 07980 930755
7B Buxton Road, Bakewell, DE45 1DA

GOODWINS

KITCHENS, BEDROOMS & BATHROOMS



DESIGN, SUPPLY AND INSTALLATION OF KITCHENS, BEDROOMS AND BATHROOMS

BASED IN WIRKSWORTH, GOODWINS ARE A TEAM OF KITCHEN, BEDROOM AND BATHROOM CONTRACTORS THAT MANAGE YOUR PROJECT FROM START TO FINISH. GET IN TOUCH TODAY.

OUR VALUES

- WE TAKE GREAT PRIDE IN WHAT WE OFFER AT GOODWINS, AS WE'RE ABLE TO HELP YOU CUSTOMISE YOUR HOME EXACTLY HOW YOU WANT IT.
- WE'LL ALWAYS TAKE THE NECESSARY TIME TO TRULY UNDERSTAND YOUR VISION TO ENSURE THAT WE'RE OFFERING YOU EXCEPTIONAL SERVICE AT ALL TIMES.
- USING THE LATEST 3D DESIGN SOFTWARE, WE'RE ABLE TO PROVIDE YOU WITH BESPOKE PLANS THAT GIVE AN ACCURATE IMPRESSION OF HOW YOUR ROOM WILL LOOK.
- MOST IMPORTANTLY, WE'LL ALSO PUT FORWARD MULTIPLE OPTIONS AND IDEAS TO HELP YOU DECIDE ON A FINAL LOOK.



OPENING TIMES

TUESDAY - FRIDAY : 09:00 - 17:00

SATURDAY : 09:00 - 16:00

SUNDAY - MONDAY : CLOSED

01629 258 500

MICHAEL@GOODWINSKBB.CO.UK • WWW.GOODWINSKBB.CO.UK

2 ST JOHNS STREET, WIRKSWORTH, MATLOCK, DERBYSHIRE, DE4 4DR

News from Youlgrave, All Saints' CE Primary School

Andy Tooze – the Peak Poet

We were very lucky to have another visit from local poet Andy Tooze. The children enjoyed a whole day of listening to his poems and writing their own. At the end of the day they were given the amazing opportunity to share their very own poems with the rest of the school and perform one of Andy's poems. During the day and after school Andy was available to purchase books from and obtain a signed copy of his poetry books. A fantastic time was had by all.



PCSO Visit

PCSO Boswell visited Class Three as part of the Derbyshire Police Community Support. He visit linked into Derbyshire's Knife Crime Prevention week. He discussed with the children a little about knife crime, the laws around this and what they can do if they feel someone is not doing the right thing. There was an opportunity for the children to ask any questions at the end.

VE Day celebrations

Children from Youlgrave, All Saints' CE Primary School celebrated VE Day on 8th May. At lunchtime we



had a VE Day themed lunch menu and a special VE Day cupcake. Parents, grandparents, friends from Church and our local community all joined us for a lovely reflective service in Church led by Rev Geoff, with children reading prayers and singing the National Anthem and our Remembrance song. After the service, Mr David Camm and Mr Gordon Coupe visited each class and talked to the children about their recollections of WWII and VE Day, which was very informative and thoroughly enjoyed by everyone. Parents, grandparents and our local community were then invited to school for a VE Day themed tea party. Many thanks to all who joined us for the afternoon.



Cricket

Last month our Year 5 and 6 children took part in a cricket tournament at Youlgrave Alport Lane Playing Field. In the main competition, we were thrilled to bring home the Small School Winner's Trophy. We were also runners-up in a mini tournament, too. It was a great afternoon on the field and the children all showed great sporting conduct.

Youlgrave All Saints' (C of E) Primary School

A welcoming, encouraging and respectful environment where children say they feel happy and safe. (Ofsted 'Good' 2024)



Open Morning
Saturday 21st June
10am-12noon
Everyone Welcome



✓ Vibrant and thriving community primary for ages 4-11 ✓ Exciting Learning Opportunities ✓ Strong Focus on Core Subjects ✓ Extensive Outdoor Learning and Play Areas, with playing fields close by ✓ Wrap Around Care available ✓ Further facilities incl. library, wellbeing and music rooms, and onsite kitchen and dining room.

Tel: 01629 636289 Email: enquiries@youlgrave-allsaints.derbyshire.sch.uk

Beating the Bounds: marking the parish boundary

Maps are quite a recent invention. Though parish maps were available earlier, it took until 1801 for the Ordnance Survey to produce its first map. How then did church parishes remember from one generation to the next where their boundary was? The answer is: by 'beating the bounds'. This involved multiple generations walking the boundary and memorising boundary stones and other markers by beating them with long sticks. This was often done around the time of Rogation Sunday, when people would pray for successful crops throughout the parish.

The tradition was revived in the church parish of Youlgrave and Middleton on the weekend of 24 and 25 May 2025. The parish boundary

broadly includes Lathkill Dale, Arbor Low, Friden, Long Dale, Robin Hood's Stride and Alport. Few parishes can be lucky enough to have such a beautiful boundary route. The route covers some 16 miles.

Sixteen Youlgrave Harriers led the charge, running the whole route on the Saturday morning in good time for lunch at The George. The next day 16 walkers completed sections of the route, including one who started at 5.30am and completed the whole route in time for morning service at church, which was followed by a hearty picnic for the walkers and church congregation. The event was supported by the British Pilgrimage Trust.

Dan Cocker, Church Warden



From the Churches

In Matthew 25:35, Jesus states: "For I was hungry, and you gave me food; I was thirsty, and you gave me drink."

This verse is often cited as a call to action to help those in need, as a means of demonstrating love and compassion. The Community Cupboard in our Church has been running successfully for about 18 months now and perhaps we are surprised or even disappointed not only that it is still needed, but that the need is growing not shrinking.

We started in a very small way but it soon became obvious that we needed to change how we were working and a cupboard was donated and installed in the church. We appealed for financial help to enable us to shop for the provisions we needed. Soon after that we established a link with Aldi at Bakewell. Our partnership with them has been invaluable, meaning that we spend a smaller amount on supplies. That link has strengthened recently and their generous donations have increased to include items other than food.

Our team of two or three helpers has grown and a number of us now collect donations from Aldi on a weekly basis – this is used to stock up our cupboard before taking any excess to Jigsaw Food Bank at Matlock and so our link with them has grown stronger too.

At the end of January we received a massively generous donation including clothing, footwear, home goods, electric blankets, lots of brand new toys and cuddlies, toiletries, water bottles - you name it we had it. It was so generous in fact that I rang Steve (who runs the whole operation at Jigsaw Matlock) to check whether he could use it all or even store it all: His reaction: "as long it's new, I'll take whatever you've got!"

I went with Helen Parker in her well-

loaded car and he gave us a real insight into the size of the task he is facing. We were stunned by just some of the facts he gave us and I wanted to share them here because we live in a pretty sheltered community, although the continual use of our cupboard would indicate there is still great need.

It is worth remembering, too, that our cupboard, although well used, serves a need outside those people who are formally referred to Steve and his team, some of whom will be from Youlgreave and area.

We already knew what great work was being done at Jigsaw

but here is a flavour of the challenges they face and the enormous logistical operation Steve co-ordinates across three units on the Lime Tree Industrial Estate at Tansley.

- He runs a team of 75 volunteers and cover the whole of post code area D45 into D4.
- They also run a clothing bank, a store for home goods and have banks of freezers.
- They have a contract to buy-in pet food because donations don't always match the need.
- They open every day except weekends and issue fresh food on one day every week.
- Currently they deliver to around 45 homes every week to people who cannot collect and that needs two people each time to meet Safeguarding requirements.
- Some they deliver to are isolated and lonely and they value the visit as much as the goods being brought.
- Recently there has been a real change in the demographic of their



clients, for instance: many of them work full time but still can't afford basic supplies after they have paid the rent or mortgage; many of them have more than one job but still cannot afford basic supplies; many of them live in their own homes (they might be widows for instance) but they are cash poor.

- There has also recently been a huge increase in victims of domestic violence – often referred to local refuges from cities - and sometimes victims flee with their children and literally nothing else, hence Steve always welcomes new toys, clothing, treats, etc, because he knows that along with basic supplies they will give spirits a much needed lift.

For our part we are heartened to hear from Steve that he thinks we must have a very good working relationship with Aldi because although he has worked with them before, the level of generosity we are experiencing is new to him. He also thinks we, as a village church, are

doing a great job – he loves that we are open to all and completely non-judgemental, a true community mission.

That is praise indeed and it is valuable because that mission is the very reason it was all set up by Adele Barker, our previous incumbent, and it speaks of how positive actions can make such a big and far-reaching difference in these challenging times.

The only thing left to say is a massive thank you to everyone who contributes in any way to our effort – in terms of goods, finance, storage, ferrying deliveries backwards and forwards – we couldn't do any of it without such a willing team.

Footnote: Aldi is generous and we receive what they give very gratefully, but it does mean that we can't necessarily focus on particular items, so if anyone wants to make a personal donation we could suggest laundry items, toilet rolls, washing up liquid, lunch box items, fruit squashes. Just leave them at the Community Cupboard in the church and we will do the rest.

Anne Cooper

Services for June

1st June 11am Family Service – Ascension

8th June 11am Morning Service – style tbc

15th June 11am Morning Prayer
Saturday 21st June 2.30pm Blessing of Wells – procession from parish church to Coldwell End

22nd June 11am Holy Communion for parish group
6pm Well-dressing service at Wesleyan Reform Chapel

29th June 11am Holy Communion

6th July 11am Family Service
6.45pm Evening Prayer at Middleton

General enquiries:

Dan Cocker, Church Warden
dan.churchwarden@gmail.com.

Funerals:

Andrew Parker, 01629 636757,
andrewparker10@yahoo.co.uk

Weddings:

Denise Figg, 01629 636526,
denisefigg.wed@gmail.com

Retired clergy:

Revd Geoff Clay 07833 252803
geoffclay@me.com

Revd Jane Clay 07802 630877
Ejaneclay@icloud.com

Revd Richard Tucker 01629 636074
rev.richardtucker@gmail.com

For services at other churches:

Methodist: Margaret (636558)
Wesleyan Reform: Isobel (636251)

Pommie People

This month's interviewee is **Graham Elliott**, Chair of Youlgrave Parish Council and Youlgrave Village Hall, a Director of Youlgrave Waterworks and former Derbyshire Dales District Councillor.

Where were you born and what's your earliest memory?

I was born in my Grandmother's house in Buxton in October 1947. I remember my mother dragging me to school on the first day – I wasn't keen to go!

Where did you go to school and what was your favourite subject?

I lived in Glapwell, a mining village on the Notts/Derbys border and initially went to school in New Houghton before moving to William Rhodes School in Chesterfield. My favourite subjects were wood and metal work.

What person had the most influence on you and why?

I suppose it's my parents. Both being ex-military, my early childhood days were quite regimented and strict.

Tell us something about you that not many people will know.

I was the driver and part of a 5-man Fire Service Team who undertook the national 3 Peaks Challenge to raise money for the Breast Care Unit at Chesterfield Royal Hospital. We completed the challenge well within our 24hour target, which included carrying out an unscheduled rescue on Mount Snowdon.

What did you do for a living and how did you get into it?

I completed a 5-year engineering apprenticeship at Firth Derihon before

20
Q&A's

pommie
people



moving on to a more exciting life with Derbyshire Fire and Rescue Service for the next 30 years. As a family we purchased and re-opened the village Garage until my retirement in 2021. My choice of relaxation now is feet up with a glass of wine.

Where's your favourite holiday destination?

Tenerife

What book are you reading and what music are you listening to at the moment?

Sir David Jason's autobiography and music from the 1960s.

Are you a cat or dog person?

Had both in earlier years.

What's your favourite time of day and why?

Afternoons. I like to get any jobs done in the morning and fall into relax mode in the afternoons.

What's your favourite food or meal?

A good hot spicy chicken curry with all the trimmings.

What's your favourite sport and did you ever play it?

I've never been particularly sporty but I do enjoy watching motorcycle road racing.

What are most proud of?

As Civic Chair I was chosen to read the Proclamation on behalf of Derbyshire Dales District Council to an Assembly in Matlock after the death of Queen Elizabeth and Access of King Charles, after which I received a personal thank you from the King.

What's the most embarrassing thing that's ever happened to you?

Whilst serving in Derbyshire Fire Service I set fire to our kitchen with the chip pan. I did ask the attending crew to arrive quietly. Luckily there were no injuries when they all fell out of the fire engine laughing.

What's your most prized possession and why?

My wife of 57 years, followed by my small collection of cars including my prized old Bentley.

What's your favourite local viewpoint?

Top of Moor Lane overlooking the village.

What do you like about living in Youlgrave?

The amazing and good hearted community we live in – there's no better place.

What could be improved about Youlgrave?

Thinking practically and what could be achievable, I'm not sure much more could be done to improve things.



Above: Graham and son Richard at Youlgrave Garage in 2004.

Below: Graham was Civic Chairman of Derbyshire Dales District Council from 2022-23.



Youlgrave Show 2025

Saturday 13th September

Youlgrave Village Hall

More details coming soon.

www.youlgrave.org.uk/youlgrave-show/

*July/August joint issue
of The Bugle*

*Deadline for contributions:
Wednesday 25th June*

To address on page 4.

Pommie Panter 2025: Runners, music, sunshine, bikes and a sausage roll



Well that was hectic. Another Pommie Panter is done, and once again we had the glorious sunshine. We're taking full credit for that, after a winter sacrifice of piña coladas to the weather god Pomotep at the stone circle. You're welcome, Youlgrave. This year saw our biggest ever turnout, with a record 174 runners charging off pumped by the pumping sounds of Youlgrave Silver Band. We had added excitement, with our marshals kept busy, directing runners and hundreds of motorbikes on our finishing straight – it did handily solve any traffic-calming issues in the village for the afternoon. Just for good measure, a cycling sportive rolled in the opposite direction, turning the village into a game of athletic chicken.

Out of sight in the fields, our Cow Squad were managing a few overly enthusiastic four-legged spectators with no incidents or wrestling.

A person-sized sausage roll "thank you" to everyone who took part – runners, helpers, musicians, cow wranglers, bakers and supporters. Through the entry fees, we've raised over £1,000 for the Parish Council's fun budget. And we've submitted our request to build a brewery off Hannah Bowman Way. Fingers crossed.

We'll be back in 2026. Until then, we'll be doing what we do: running around fields, circling the parish boundary (which should have been successfully done before publication), and finding excuses to eat more baked goods/hang around in the pub. Keep an eye on our webpage to see what we're up to. **Youlgrave Harriers**





Church Farm Diary, June

Silaging has started at last, even though the weather has been so dry and the crops have been thinner. However, it's surprising how much the grass has grown with no rain, just the dew and moisture from the ground. Hopefully it will start to rain soon or else the crops situation will be very worrying. We seem to keep



avoiding the rain, with other local areas getting some showers. This weather is lovely if you are on holiday, just wait till the children have broken up from school, then the rain will come!.

Please excuse the agricultural traffic on the roads. It's something that cannot be avoided at this time of the year. Not all farms are in a ring fence, many have land away from the farm, so traveling on the roads is necessary.

The good news this month is that Joseph has passed his Transport Managers Certificate. This is a very intense exam on the knowledge of running a haulage business. He is taking after his Granddad with his interest on lorries.

Marjorie Shimwell

Recipe of the month: Lemon and Elderflower Drizzle Cake

This month's recipe is for a nice light cake.

Ingredients for the cake

175g soft unsalted butter
150g caster sugar
100g plain flour
75g ground almonds
Pinch sea salt
1 ½ teaspoons baking powder
3 large eggs
1 large lemon
2 tablespoons elderflower cordial

Ingredients for the Drizzle

3 tablespoons of lemon juice from the lemon above
100 ml undiluted elderflower cordial
1 tablespoon granulated sugar

Method

Heat the oven to 180 fan and line a 20cm square or round tin with baking parchment

Put the sugar, flour, ground almonds, salt, baking powder and eggs into a processor or mixer.

Finely grate the zest of the lemon and mix until you have a thick batter then add the elderflower cordial and mix well.

Pour into baking tin and bake for about 30 mins.

While the cake is in the oven make the drizzle by combining the juice from the lemon and the elderflower cordial. Not the sugar.

Place the cooked cake in its tin on a wire rack and prick the top, gradually pour the syrup over the top and once it is soaked in sprinkle over the granulated sugar and leave to cool completely.





Youlgrave, Tuesday 1st July

Meet at the top of New Road at 8pm. Duration about 1 hour. As part of this national event to find out more about the present status of the swift, you are invited to join in a gentle stroll round Youlgrave, looking and listening for swifts and possible nest sites. All welcome. Contact Ian Weatherley, 48iweatherley@gmail.co.uk

Come and help us tidy up the churchyard

A Churchyard working group is meeting monthly on every second Saturday morning at 9.30am to clear ivy, weeds and brambles from the older gravestones. The next meeting will be on 14th June. Everyone is welcome and you can stay as long as you wish. Please bring gloves and secateurs. Refreshments will be provided. Maybe you have a relative's grave you wish to clean? Below is a before and after photo of an area cleared. We uncovered a gravestone last time with the unusual name of Silence (photo right).

Sandra Harrop



Youlgrave Wildlife Notes: May 2025

What a change in the weather! As I write, on 23rd May, we have rain forecast, which we need, but there was sufficient water in the ground for lots of insects to feed the baby birds and to get the wildflowers going. The first report of swallows was on 21st April when they were seen gathering mud for their nest. Swifts were first reported on 27th April with plenty of sightings since (20 at one count). The annual village swift walk to support the national Swift Awareness Week will be on Tuesday 1st July, starting at the top of New Road at 8pm. We will try and identify some active nests. There seem to be only a few house martins.

Cuckoos have been seen and heard on Stanton Moor and Mawstone Lane and one was reported from the Dale recently. One bird that has become very common on the New Dam and the river is the mandarin duck. These birds, though attractive, are not native and may be competing for nest holes. Apart from buzzards, birds of prey have been rather scarce, with no reports of red kites, though peregrine have passed through and a barn owl was watched hunting in the Dale.

If my car is anything to go by, there are a lot of insects this year. I have at least two blue tit nests in the garden and it has been delightful watching them bringing in insects to the nest box by our kitchen window. Blackbird and song thrush have also nested in gardens and their fledgelings can be seen. Occasional may fly hatches have

been a treat for the trout. In the evenings, bats can often be seen detecting insects by echo location.

The fine weather, with plenty of invertebrate food, has benefited the slowworms which love to bask in the sun.



Slowworm (photo: Lisa and Paul).

In the river there have been more reports and photos of lampreys spawning. Nine deer were reported in the Dale and there is hedgehog poo on our lawn.

On my wildlife walk on the 23rd I found 55 species of wild flower in bloom. Some seemed very early, like the maiden pink and meadow cranesbill, but both of these were very sparse. A real treat was finding common star of Bethlehem. I have found this before but that was years ago.

They were in a very similar place to the last time I saw them, but where have they been? On the river the water crowfoot is carpeting the surface with white. There were lots of tadpoles around the edges of the New Dam. They haven't got any legs yet and I assume they are mainly toad tadpoles, as we get lots of adults crossing the track and thousands of baby toads invading the fishing platforms later in the year.

There was a female mandarin with a lot of ducklings on the top pool in the Dale. My thanks to this month's contributors, Lisa, Simon N., Simon C, Andy, Edwina, Richard, Laetitia, Rebecca, Pat, Tony, Ruth, Kate, Gill and Maggie T. and Erica

Ian Weatherley
email 48iweatherley@gmail.com



WE ARE HIRING

Key Responsibilities

- Exceptional care & support to clients
- Personal care, Meal preparation, Medication
- Promote independence and dignity
- Maintain records and documentation
- Communicate effectively

Benefits

- Full-time and part-time positions
- Competitive pay rates
- Extensive training
- Opportunities for career advancement
- Paid time off and holiday benefits
- Mileage reimbursement (TAX FREE)

Feel Like This Is you?

- Genuine passion for care & support
- Excellent communication skills
- Ability to work independently & collaboratively
- Flexible & adaptable

 enquiries@daisychainhomecare.com

 01629 735100

 <https://www.daisychainhomecare.com>



Homecarer available for short term help

*I am a palliative care OT who
formerly ran her own homecare
company for many years.*

*Based in Alport, I'm available early
am/eve Mon-Fri and anytime
weekends, until you can arrange
more permanent care / help for help
with:*

- ◇ *Personal care*
- ◇ *Medication prompts*
- ◇ *Meal preparation*
- ◇ *Advice on pressure care*
- ◇ *Moving and handling advice*
- ◇ *Advice on aids / adaptations
around your home*

*Please ring Dawn on 01629 636932
or 07949 191382 for more details.*



Call Dan on 07525 022628

Email: drb_125@hotmail.com

 DRB.GeneralServices

Small Building Projects/Renovations/House
Clearance
Pointing/Re-Pointing
Garden Maintenance & Clearance & Lawn
Mowing
Gutter Replacement, Repair & Cleaning
Jet Washing
Painting, Decorating & Tiling
General Handyman Services
No job too small. Fully Insured.



WE OFFER:

- **TREE PRUNING/REDUCTIONS
/REMOVALS**
- **HEDGE TRIMMING & SHAPING**
- **LOG SPLITTING**
- **EMERGENCY STORM CALL OUTS**
- **TREE RELATED QUESTIONS
& QUERIES**



FOR A FREE QUOTE:
07748455637
info@clarketreeworks.com





Murder and mayhem at Youlgrave WI!

The month of May was absolutely packed with busy meetings and social activities. Our May meeting welcomed the Chariots Drama Group. Their performance was entitled 'Somewhere by the Sea', directed by Maggie Ford and Sharon Sansom. The scenes were based around 'The Close', a neighbourhood that revealed special rules, unexpected liaisons, an absent Doctor, and a very keen footballer. Everyday life was portrayed with tales of dodgy dog food, flying ducks, naturism, and even cannabis brownies. After much hilarity and at times empathy, at the finale we witnessed a special tree planting on The Close, with party poppers shared out, and our WI supper laid out for us as we thanked the team for an extremely entertaining evening.



Continued next page

Ace WI detectives at work.



Murder Mystery Clue Hunts



Embark on an exciting murder mystery adventure in the countryside!
Follow a map, decipher cryptic clues, and gather evidence as you unravel the mystery.
Your mission: to deduce the murderer in a captivating plot.

Cost: £6 per group (no group size limit). Scan the relevant QR Code below to buy.
A smartphone with QR code scanning capability is required to participate.



SCAN ME

A gentle stroll of 1.3 miles around Youlgrave Village taking in the hosteleries and cafes.
The Plot: 'A Cruise...To Die For': Guests aboard a luxurious cruise liner find themselves trapped in an unforeseen nightmare. The once opulent voyage turns into a maritime crisis as the newly married Buster Cunningham vanishes overboard, marking the start of a series of tragedies.



Bakewell

An easy 2 mile walk along Coombes Road and the Monsal Trail
The Plot: 'A New Year...To Die For'. The year is 1925 and the dysfunctional McTavish Clan has assembled at their ancestral home - Doom Castle. As the clan gather to hear the reading of cousin Jock's Will they sense the palpable anticipation of a tale unravelling - a tale that is, quite literally, to die for.



Youlgrave

A 3 mile walk along winding lanes, through lush fields, and by the river in Bradford Dale
The Plot: 'A Talent Show...To Die For'. Contestants in a TV reality show are baffled when top judge, Simeon Lewok, is found dead in a locked room. Among the curious characters under suspicion are Benny Bess the Contortionist, Hypno Bob the Hypnotist and Slinky Selena the Snake Charmer.

On May 17th we had a lovely creative Saturday at the Methodist Church, preparing silk scarves for tying and dyeing with wonderful shaded results. Now to the Murder – Helena Tendall had meticulously set a Murder Mystery scene especially for the WI. Thirty two attendees had a marvellous evening working out who the culprit was, in four separate teams of eight unique characters, suitably dressed up. Fun and intrigue all washed down with wine and a superb shared savoury supper. It truly was a WI meeting to die for!

On June 4th, the National Federation of Women's Institutes AGM will be held online. Speakers will be 'Angel' Strawbridge and Emma Bridgewater. Val will be watching on our behalf and reporting back. Our agreed Resolution is 'Bystanders can be Lifesavers' . Supper Club, a surprise theme so far, is on June 26th. After the successful April Litter Pick, another one is planned for June 29th.

Another of our many extra events will be a Minninglow walk on June 24th with Sue Weatherley, followed by supper at the lovely Sycamore Inn. The Choir will entertain residents of Burton Closes care home, Bakewell, on June 25th, playing the new digital piano again. Also on July 23rd 'An evening of Cake and Entertainment' is planned, so please save the date.

Our WI June meeting is on Tuesday June 10th at The Village Hall at 7.30pm. Influencer and blogger Molly Scott will highlight her work involving 'What's on in Derbyshire'? Do come along and meet us if you fancy trying us out, you will be most welcome.



Enthusiastic role playing.

Liz Hickman

Funding opportunities for local groups

Derbyshire Dales CVS has identified a number of funding opportunities for local groups wanting to make a difference in their area. They include **Leek United Building Society Charitable**, which provides grants and donations that will have a positive impact on the lives of disadvantaged or vulnerable people in our communities; **Severn Trent Community Fund's Core Funding Programme** for groups that covers essential running costs; and **Funding for Projects that Teach Children about the Countryside** from the CLA Charitable Trust for projects, in particular, that focus on children and young people, disadvantaged financially, physically, mentally, or from areas of deprivation. For more details go to www.ddcvs.org.uk/news/funding-opportunities or contact DDCVS on 01629 812154.



Derbyshire Dales
Council for Voluntary Service

Bakewell International Day of Dance, Saturday 28th June

We are excited to be holding our 21st Bakewell International Day of Dance. Over 30 groups will be showcasing a variety of dance styles from around the world in six outdoor venues around Bakewell, from 11am to 4.30pm. Free. Also dance workshops running at the Town Hall. Wet weather programme if necessary. Visit www.bakewelldayofdance.co.uk for more information.



Ready, Steady, SHOW!

Plans have been made to stage the next free to enter **Winster Country Show** on **Thursday 3rd July** in the marquee on the playing fields behind the school. Whether you come from Winster or surrounding villages like Alport, Middleton and Youlgrave, join us at our Country Show.

There are Competition Classes for all age groups. Bakers have plenty of scope to show off their skills by entering any or all of four categories: A Celebration Cake; Tray Bake; a Plain Undecorated Sponge Cake; and a Gluten Free Cake. If you prefer making Jams and Jellies or Citrus Marmalades we have categories for you too.

For Flower Arrangers there is a choice of three categories: A Posy of Garden Flowers; a Door Arrangement using recycled and recyclable materials; and an Arrangement of Garden Foliage.

Artists can enter a Framed Painting, Drawing or Collage in any medium.

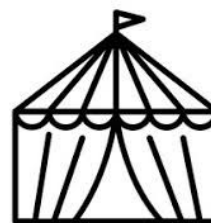
Fabric crafters have their chance to shine in the Yarnwork category for knitting, crochet, weaving, tapestry and macramé. For Decorative Sewing there is another category for machine or hand embroidery and collage.

Jewellery makers can show their skills by making any item in any material.

Woodwork of any sort has a whole category of its own displaying skill, technique, imagination and craftsmanship.

Just for the younger ones in Pre School, KS1 and KS2 we have a separate class showing us what they can make on their own: a Door Decoration using recycled and recyclable materials.

Entry forms available from Winster Village Shop and online at www.winster.org. For more information contact aliabsolute@hotmail.com or call 01629 650303.



LOCAL COMMUNITY GROUPS & ORGANISATIONS – SPONSORS

Bradford River Action Group, water sustainability in the Bradford valley, 636189 www.riverintime.org.uk

Granby House, Housing for older people, 636836 www.granbyhouse.org

Middleton & Smerrill Parish Council 636151
parishclerk@middletonbyyoulgrave.org.uk
www.middletonbyyoulgrave.org.uk/parish-council

Middleton by Youlgrave Village Hall 07854 432101 peterjworrall@aol.com

Youlgrave Bowls Club, contact Ken Clayton, 630005, kenclayton@mail.com

Youlgrave Cinema, 636836

Youlgrave Community Land Trust, 636887
www.youlgravecommunitylandtrust.org

Youlgrave History Group, contact yhgenquiries2@gmail.com

Youlgrave Methodist Church, 636558

Youlgrave Parish Church, 636576

Youlgrave Parish Council, 636151
www.youlgrave.org.uk/youlgrave-parish-council youlgraveclerk@youlgrave.org.uk

Youlgrave Preschool, 07494 522615
enquiries@youlgravepreschool.org
www.youlgravepreschool.org/

Youlgrave Scout & Community Youth Hall, 636887

Youlgrave Silver Band, Thurs 7.30pm
Methodist Hall, Learners 7pm, 07734 714227 www.youlgravesilverband.com

Youlgrave Village Hall,
enquiries@yvh.org.uk, www.yvh.org.uk

Youlgrave Welldressers, 07899 920204
www.youlgravewelldressers.co.uk/

Youlgrave Wesleyan Reform Chapel, 636251

Youlgrave Women's Institute, 07377 586330

Youlgrave Waterworks Ltd
James Bacon (leaks) 07866 365610
Admin matters: 01629 636151
waterworks@youlgrave.org.uk

Do you struggle to get to healthcare appointments?

Do you worry about relying on family, friends and neighbours?



**Bakewell and Eyam
COMMUNITY
TRANSPORT**

Bakewell and Eyam Community Transport

co-ordinates a car scheme throughout the northern Derbyshire Dales and Hope Valley. Our team of friendly volunteers use their own vehicles to provide individual journeys from your home to medical appointments – including hospitals, clinics, dentists, doctors and opticians.

If you haven't previously travelled with BECT then it just takes a 5 minute chat on the telephone to register and once registered you simply need to telephone to request each journey – a minimum of 7 days notice is required.

There is a charge for each journey which will be confirmed at the time of booking; there is no charge for the time the volunteer waits whilst your appointment is taking place. For more information and to register call 01629 641922 (Tues– Fri, 9am–5pm).

ANNUAL SPONSORS: BUSINESSES & TRADERS/PROFESSIONALS

Pubs & Accommodation

Bull's Head Hotel 636307 bullsheadyoulgrave@gmail.com
www.thebullsheadyoulgrave.co.uk/

Farmyard Inn 636221 joinus@farmyardinnyoulgreave.co.uk
www.farmyardinnyoulgreave.co.uk/

George Hotel 636292 georgehotelyoulgrave@outlook.com
www.georgehotelyoulgrave.co.uk/

Hopping Farm Caravan Site, Mrs M. Frost, 636302

Kingfisher Cottage, Matthew & Monika Jacobsen, 07440 530745 www.kingfisher-cottage.uk

The Old Bakery B&B and self-catering accommodation, Church Street, Youlgrave 630005,
kenclayton@mail.com www.theoldbakeryyoulgrave.co.uk/

Peak Pods En-suite glamping pods, Alport, 636874, www.peakpods.com

River View Cottage 2 double bedroom self-catering cottage facing the river Bradford,
Youlgrave. www.river-view-cottage.co.uk

Youlgrave Youth Hostel, www.yha.org.uk/hostel/yha-youlgreave

Shops, Cafes & Home Delivery

Amy's Dairy Fresh glass bottled milk & orange juice, free range eggs, cream and yogurts,
636639 & 07799 880740

Peak Feast Bakers of delicious cakes, pies and treats, The Workshop, Moor Lane, 630000,
www.peakfeast.co.uk

The Ginger Nut Shop & Tearooms Well-stocked convenience store, hot and cold takeaway
food, including breakfasts, 630208

Youngs of Youlgrave Post Office & Village Store, newspapers, magazines, cards, stationery
& groceries, plus free cash withdrawals and deposits, 636217

Fountain View Bakery, artisan bakers of bread, cakes & pastries baked on site, and served
in our newly renovated café + Dark Woods speciality coffee with over 70 Great Taste Awards.

Building and Interior Services & Supplies

Goodwins Design, supply and project managed installations of kitchens, bedrooms and
bathrooms, 01629 258500 michael@goodwinskbb.co.uk

Derbyshire Aggregates 636500 www.decorativeaggregates.com

Long Rake Spar, large selection of decorative stone for all your garden projects, 636210
www.longrakespar.co.uk

Marsh Brothers Engineering Services, bespoke repair, renovation and replacement of cast
and wrought iron components (gates, railings, etc), 636532, info@marshbrothers.co.uk

T. Nutt & Sons Supply and fit carpets, vinyl, wood, laminate and karndean, 01246 863148,
www.nutt.co.uk

Other Local Services

Jo Copeland, mobile professional hairdresser, precision colouring, perming & styling 07711 255004

Phil Smith, mosaic & mural artist, outdoor work specialist, house signs, etc, 630018,
grouchygrouter@btinternet.com www.grouchygrouter.co.uk

Youlgrave Garage, Motor engineers and MOT Test Station, 636943

Cllr Laura Mellstrom, Derbyshire Dales District Council, c/o Town Hall, Matlock DE4 3NN,
07503 674335, Laura.Mellstrom@derbyshiredales.gov.uk

See inside back page for local community groups & organisations