



The Bugle



**A chance to blow your trumpet for the villagers of
Alport, Middleton and Youlgrave**

No. 230

November 2020

New Sensory Kitchen goes down a treat at Youlgrave School

The children in Class 1 at Youlgrave All Saints' CE (VA) Primary School have been really excited to explore and play in the new Sensory Kitchen. The old 'Mud Kitchen' has been revamped with new jars and containers to hold seeds, flowers, nuts, conkers, acorns, leaves, sticks and lots more interesting natural materials. Staff in Class 1 have been working hard to improve the outdoor kitchen, which we were very lucky to have made for us by the talented Ethan Bown. He used and adapted our plans to make bespoke kitchen units for the children to use in their play.

Children will be using their senses to explore everything the kitchen has on offer – from sage, lavender, mint and



thyme to pumpkins for them to scoop out and make pumpkin soup or whatever they wish to create.

We are going to be painting the units with blackboard paint to allow staff and children to make marks in the kitchen. These may be drawings, menus, the number of ingredients they have in their pans or labels for the items in the kitchen. We have attached small branches to one of the units to help children identify and name different types of trees and leaves.

There is a new shop section of the Sensory Kitchen, with fruit, herbs and



Continued on page 8



Need help or advice?

Sarah Dines
Member of Parliament for
Derbyshire Dales

You can write at any time to:

Sarah Dines MP, House of Commons
London, SW1A 0AA

Phone: 020 7219 6660

Email:
Sarah.dines.mp@parliament.uk

Website: www.sarahdines.org.uk

Sarah Dines MP, working hard for
Derbyshire Dales

J.W. & J. Mettam Limited

Family Funeral Directors
since 1899

Ambrose House,
Granby Croft,
Bakewell DE45 1ET

(01629) 812114

BAKEWELL COACHES

**16-SEATER MINI
BUS HIRE**

**51-SEATER COACH
HIRE**

CALL ALAN
07790 224454



- Supply & Fitting of all Domestic and Contract Carpets
- Supply & Fitting of Vinyl, Laminate & Karndean Flooring
- Supply & Fitting of Real Wood Flooring
- Supply & Fitting of Sisal and Natural floorings



- ❖ Guaranteed Workmanship
- ❖ Free Fitting Service
- ❖ Free Home Selection Service
- ❖ Moving & Replacement of Furniture
- ❖ Disposal of Old Carpet
- ❖ Customers' Own Car Park

43/47 High Street, Clay Cross, Chesterfield
Tel: 01246 863148



See our WEBSITE at: www.nutt.co.uk

Youlgrave Surgery Flu Services update

For the attention of all patients eligible for flu vaccinations 2020

Making an Appointment:

- If you are **over 65** and eligible for the flu vaccination you can telephone the Practice NOW to pre-book your appointment
- If you are **under 65 'at risk'** and eligible for the flu vaccination, you can telephone the Practice to pre book your appointment
- Under 18's & Children's flu vaccinations can be pre-booked from early October.

Attending a Flu Clinic Guidance:

- If you are **unwell** or experiencing any **COVID-19** related symptoms such as a high fever and or a persistent cough or loss of taste or smell you **must not attend** the Practice for your flu vaccination, please telephone the Practice to reschedule your appointment.
- You should **attend** your flu vaccination appointment **alone**, unless you require a carer with you for support. This is to ensure that we can manage appropriate queues and Practice footfall to protect both valued patients and our staff.
- Vaccinations will be delivered in **order of appointment time, not arrival time**, therefore, you will only be allowed to queue up to 5 minutes before your appointment start time.
- Please **do not arrive late** for your appointment, if you are late you may be asked to wait until the end of the clinic to receive your vaccination.
- If you **require seating** whilst in the queue, please advise staff upon arrival.
- The **Flu Clinic queue** will be co-ordinated from the Practice car park
 - Upon your arrival a member of staff will be available to mark your arrival.
 - Outside the Practice you will need to follow the Government **social distance guidelines**.
 - Upon entry into the Practice you will be required to wear a **face covering**, unless you are exempt
 - You should provide your own face covering where possible.
 - During the queue inside the Practice you need to follow the **tape queue lines** to ensure that you are following the Practice's **social distancing guidelines**.
 - After your flu vaccination you will be asked to **exit** the Practice via the **fire door exit** nearest to the consulting room and walk around the building to your car. This is to promote a one-way system and reduce any risks of social distancing challenges.

*** Please help us to help you by ensuring we have an up-to-date contact number and email address for you**

Youlgrave Surgery: other updates

Please can patients try to pay attention to the signs on the front doors when entering the building, as there is clear instruction on them as to how we are operating at present.

Please do not come into surgery with any queries. As well as trying to limit footfall through the building, staff are not opening the hatches at the moment and find it difficult to hear. Please call or email instead.

As a requirement of NHS England, we have recently introduced a digital first triage solution. If you feel you need to see a doctor the best way to do this is to fill in an Engage Consult digital triage form via the practice website. Please try to do this as early as possible in the day to help us allocate workload appropriately and ensure anyone who needs to be seen that day can be. Also please give as much detail as possible to help us effectively and safely triage what is urgent.

Thank you and stay safe.

Dr Ed Oakley and team

SECOND NATIONAL LOCKDOWN

Thursday 5th November – Wednesday 2nd December

As before, your village businesses will remain **OPEN** to serve you throughout the next few weeks of lockdown. See back page for contact details.

- Peak Feast
- Youlgrave Garage
- Youlgrave Post Office
- Youlgrave Village Shop

Please support your village businesses – they are there for you!



You can find out more about local restrictions or to sign up for coronavirus news, guidance and support for your area at www.derbyshire.gov.uk/covidmeasures

Visit www.derbyshire.gov.uk/coronaviruscases for more information about cases in Derbyshire and for information on how to stay safe go to www.derbyshire.gov.uk/coronavirus



90 years young

I would like to say a big thank you to all my family and friends and neighbours for their birthday wishes and lovely cards and gifts I received. It was all so lovely.

Barbara Lowe

All Saints Church Christmas Eve Nativity Service

This year we won't be able to have our usual hugely popular Crib Service due to Covid-19, so the idea is for everyone to meet at Coldwell End car park dressed (optional of course) as kings, shepherds and as many angels as possible at 5pm Christmas Eve, and walk down the village to the church to listen to a few carols. It will be informal as usual and we would like everyone to join us to celebrate the start of Christmas.

FREE WOOD

Lots of wood available to take away following building works at Old Stables, Main Street, Youlgrave.

Free but please ring first - Simon or Lesley on 630252.

Clothes recycling for School

Don't forget that the new recycling bank is now in place in the car park of the Farmyard Inn, where you can donate your unwanted clothes and shoes and help raise funds to support our village school.

WANTED

A treasurer for Youlgrave All Saints Church. Unpaid but very rewarding. Please contact Andrew Parker on 636757 for more details.



Driver arrested

Derbyshire Police reported that shortly before 8pm on Wednesday 14th October a vehicle was stopped on Alport Lane near Youlgrave due to concerns about the motorist's driving. A 29-year-old man was arrested on suspicion of being unfit to drive a motor vehicle through drink or drugs and possession of drugs following a search of the vehicle. Enquires are ongoing.



Visitors to the Dale

Dear Editor

As usual, I read Marjorie's Church Farm Diary last month with interest. There was a quite sudden change and opening up of the countryside; seeing all the cars parked at Conksbury did make me feel anxious. I was worried as to how the swans and the cygnets, that we've all been watching, would cope. But I reminded myself of the news clips from early on in the lockdown, with people trapped in high-rise flats with large south facing windows who were really struggling to keep body and soul together. We were so lucky in many respects – and I didn't feel guilty because we all had our share of bother during foot and mouth in 2001. We've

been faced with a whole generation of folk who are unused to the countryside and have never heard of 'the countryside code'! This led me to thinking about the old public information films – 'dip, don't dazzle'! 'For Pete's sake (picture of weary Pete the park attendant with his litter picking stick!) don't drop litter', 'clunk, click every trip', etc. I was heartened, therefore, to see big signs attached to stiles saying 'Welcome to Monsal Dale, cattle graze here, plastic litter can kill'. There were similar signs welcoming and educating people visiting Dovedale. Perhaps next year when our city friends return they'll be that little bit wiser and more considerate?!

Anne Croasdel
Youlgrave

VILLAGE HALL NEWS

It is with enormous regret the Village Hall committee will not be able to hold its annual Pantomime in 2021. We are hoping to hold some form of show at some point in the year and if you have any suggestions and ideas, or if you would like to offer any help, please contact Lyn Nolan on 636919.

The Christmas Fair is still to be held on the 5th December. If you would like to have a table please contact Lyn on 636919. If you would like to join the Village Hall committee, please contact Paul (636919) or Sandra (630003). We meet once a month and would welcome anyone who would like to contribute to the running of the village hall which is a vital part of our village community.

YOULGRAVE CHRISTMAS LIGHTS

The Band, Parish Council and All Saints Church have worked together for all the village to enter the Christmas spirit (hopefully) following lockdown and on 5th December between 5-5.30pm we will be lighting the Christmas tree outside the church.

We would like everyone in their houses to also take part by switching on their Christmas decoration lights at the same time, so we have a whole village event. There will be two groups of bandsmen and singers, performing carols throughout the village to reach both ends and bring music and cheer to everyone. *Judith Orchard*



Continued from front page

nuts for sale. The materials will be changing frequently to keep the kitchen looking and feeling fresh and exciting.

Children will be engaging in rich and stimulating play, taking on roles in their play, pretending objects are things from their experiences and acting out scenarios with other people. They will be showing curiosity about objects, events and people and using their senses to explore the world around them.

Currently, the Sensory Kitchen has a glowing Autumnal theme. As we head into Winter and towards Christmas, we will be decorating our sensory kitchen and giving it a festive feel!

So, if children would like to buy any pine cones, baubles made from natural materials or are craving some mince pies and hot chocolate, they know where to visit.



Youlgrave W.I. to tackle prickly subject

A prickly subject will be unearthed for our November 12th W.I. Zoom meeting. From our sources of zoom speakers, we shall offer the Suffolk Prickles Rescue Centre one.

In October, we enjoyed a very fond account of a Norfolk gentleman who originated from Germany and escaped during WW2 as a boy to become a much respected member of his community.

Please note that Mr Hedgehog will be appearing at 7.30pm latest on the Thursday after our Zoom AGM, so hopefully more members will join these two virtual meetings now we are even more bound to our homes. Help is on offer to anyone who needs advice on downloading and joining a zoom meeting.

So to the belated AGM - this will be at 7pm on Tuesday November 10th, when our

officers and Committee will be confirmed, after members have given their nominations and proposals. The business side will be short, with a quiz provided so we can all relax with our nibbles and drinks while being able to view many friends we have missed since we met in the Summer.

Despite the postponed Coffee Morning, our crafters are working towards a stall on December 12th outside the Farmyard Inn, and hopefully a village Christmas event. Committee have soldiered on and not been idle in planning a great 2021 Programme. There will eventually be much more to look forward to and enjoy together in the future.

Best wishes to all

Liz Hickman



History Society produces New 'Wider Village' Walk leaflet

The Youlgrave History Society published a Village History Trail in 2019. This has been very well received and so the Society decided to publish another leaflet. While the first leaflet focused on the history of the village centre, the second one is a longer history walk that takes in Alport, Bradford Dale and Middleton.

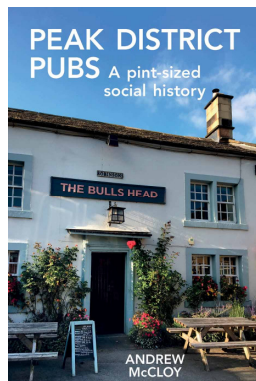
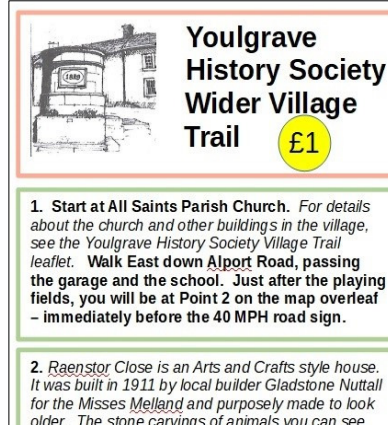
Chris Shimwell and I worked together to create the leaflet and the biggest challenge was deciding what to leave out as there is so much that could be included.

After an enjoyable planning session in the pub (where else...?), a list of places of interest was drawn up and then joined together in a logical route. We wanted to follow the successful format of the first leaflet, which was A4 with a map on one side and three columns of text on the other. The first leaflet covered about 20 points of interest, whereas the new one will have 14. There are slightly less as more space is required for route directions on the longer walk.

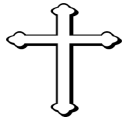
The next step was to test the route and actually walk round it, trying to put ourselves in the shoes (or boots) of someone who was unfamiliar with the walk. During the walk, we also took photographs to include in the leaflet. Our pilot walk took slightly longer than expected as we came across a sheep that needed rescuing after getting his head stuck in a fence in Brookleton!

The result is, we hope, an interesting and varied walk that introduces people to the rich history of the local area. The complete walk is about 5 miles/8 kilometres and will take about 2 ½ or three hours but there are options to shorten the walk at several points along the route.

The Youlgrave Wider Village Walk leaflet will be available in Peak Feast, the Post Office and the Village Shop in early Deecember. *Simon Wilson*



*Youlgrave author and Bugle editor Andrew McCloy has written a new book celebrating the heritage of local pubs. **Peak District Pubs – a pint-sized social history** traces the evolution of 'the local' from humble alehouse to modern roadhouse and along the way takes in everything from haunted pubs and theme pubs through to new community-owned pubs and micropubs. So, if you can't go in them at the moment then read about them instead! The book costs £11.99 and is available from Youlgrave Post Office or via <https://gritstonecoop.co.uk/>*



From the Churches: Remembrance will be different this year

Normally the Remembrance Service on the second Sunday in November fills the parish church. This year the church's seating capacity has been greatly reduced owing to the Covid restrictions, and there was no fair way of limiting attendance to the numbers permitted. So we had planned to take the service on 8th November outdoors and hope for the best with the weather. It is now clear that will not be permitted under the new lockdown announced last Saturday. However, a bugler and standard bearer will be present and the bugler, Helen, hopes to play the Last Post and Reveille at 11am from the church tower, weather permitting.

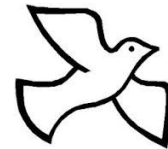
Remembrance in 2020 will be different, too, because 2020 has been like no other year. Among the thousands who have died of Covid-19 this year are many who have contracted the virus in the course of their duty – as medical or support staff in hospitals or care homes, or in essential services. In a real sense they have given their lives for the rest of us just as service personnel have in wars. It is right that we should remember them too, and I trust there will be a chance to do so in the national Remembrance service to be broadcast on 8th November.

Coronavirus has hit many communities harder than it has hit Youlgrave, and hit some in our locality harder than us. Families are going hungry now, and there may well be more by Christmas. We are collecting again for the foodbank in Matlock. As the church building is now closed again, please bring your gifts of tins or packets to the post office any time that it's open.

There will be no live services for the next four weeks but we hope once again to keep many of you in touch by email. This year more than ever, we make the 'remembrance service hymn' based on Psalm 90 into our own prayer:

"O God, our help in ages past, Our hope for years to come,
Be thou our guard while troubles last, And our eternal home."

Richard Tucker



SERVICES IN NOVEMBER

There will be no live services for the next four weeks. We hope to resume socially distanced worship on Sunday 6th December

11.00am Youlgrave Family-friendly service
6.45pm Advent Evening Prayer at Middleton

For services at other churches:

Youlgrave Methodist - Margaret 636558
Youlgrave Wesleyan Reform - Isobel 636251

CHURCH CONTACT POINTS

Wardens: Andrew Parker, 01629 636757, andrewparker10@yahoo.co.uk (general enquiries, funerals). Brenda Harrop, 01629 636638

Baptisms: Andrea Willans, 01629 636004 or 07942 922307, mrswillans@gmail.com

Weddings: Denise Figg, 01629 636526, denisefigg.wed@gmail.com

Memorial candles at Christmas

If you would like to remember someone with a Memorial Candle in Church at Christmas, you can order these from November. Please put 50p per memorial candle in a sealed envelope and on the envelope please write the following details:

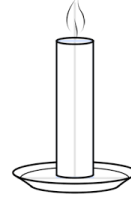
Donor: *Your name*

In memory of: *Your loved ones name(s)*

From the beginning of November to 11th December sealed envelopes can be left at the Post Office or the Village Shop.

Unfortunately we can only supply memorial candles if we have received your 50p per candle to cover the cost.

If you have any questions please ring Catherine Birch on 01629 636083.



THE BAND WAS BACK!

Like many other organisations, we worked hard to get the village band back to regular rehearsals, and thanks to Paul Hogan's efficient enthusiasm we had more than a month of meetings in the Village Hall every Thursday. With social distancing, three sets of risk assessments, masks, gloves, bell covers, separate stands and everything touched cleaned before and after use... everyone was just so glad to be playing as a group.

We still have plans to play for you all through Christmas, but of course it all depends on Boris's decisions and whether we come out of lockdown on 2nd December. So look out for outside performances in December. We will cheer your Christmas if at all possible.

We still welcome players if they want to join us, but please let me know beforehand on 07734 714227 or youlgravesilverband@gmail.com. See our web site <https://www.youlgravesilverband.com/> for updates. *Judith Orchard*

Update from Youlgrave Waterworks

Youlgrave Waterworks held its delayed AGM under Social Distancing Conditions in the Reading Room on 19th October. It re-elected the retiring 3-year term directors and approved the final accounts, which showed a healthy position, although a much reduced bank balance as our major investment in completing the Ring Main at Mawstone Lane has been completed with improvements in flow and pressure (welcomed by those on the outer edges of the system). The use of water increased substantially in lockdown, compounded by the dry weather and excessive use of garden sprinklers and this is still at a higher level than normal weekly average, although the spring flow has increased with the return of the rain.

All payments for this year should have been received by 31st October and any outstanding will receive a letter chasing payment this month.

BAKEWELL PET SUPPLIES



Tel: 01629 814264



Mandy's Cattery

Luxury purpose built indoor cattery
Individual heated bedrooms
and own exercise area
Scratch poles, toys & cuddles
FAB trained owner
Nr Bakewell, Derbyshire

Call Mandy Brown for more details:
07901 710767

www.mandyscattery.com
Email - mandy@mandyscattery.com

David Kenworthy – Joiner

All types of joinery work undertaken

FREE QUOTATIONS

- Glazing
- Doors & windows
- Garden Decking
- Flooring
- Purpose made joinery
- Fitted Kitchens
- Fitted Furniture
- Any General Home Maintenance Work, no job to small

Rose House, Youlgrave, Derbyshire
DE45 1UT

Call David: 01629 636574
Mobile 07791 185536

TAYLOR ELECTRICAL SERVICES

All aspects of electrical work undertaken
Apprentice trained over 10 years experience
Fully qualified & registered
Reliable & friendly service
07874 921091



TAYLOR ELECTRICAL
SERVICES
(07874 921 091)

Michael Arthur

Kitchens, Bedrooms & Bathrooms

Providing customers in Derbyshire with elegant kitchens, bathrooms and bedrooms they can be proud of. From supplying to installation, Michael Arthur covers all aspects from start to finish.



01629 258 090 | michael@michaelarthur.co.uk | www.michaelarthur.co.uk
Michael Arthur Limited | 23 Firs Parade | Matlock | Derbyshire | DE4 3AS
Open Monday-Friday 9am till 5pm, Saturday 9am till 4pm, Closed Sundays

 Find us on Facebook 



Church Farm Diary, November

I can't believe that Christmas is just round the corner. You would think that all this self isolating

time would have gone slow, but no it has simply rushed along, because apart from not seeing the family at the beginning of the Covid life has been much the same for our families. Even one of our son-in-laws is enjoying working from home with a new kitten wrapped round his neck when he is making conference calls, much to the amusement of his fellow workers.

We all hoped that it would be gone by Christmas and we would be able to start a New Year safely, but it doesn't look that way until a vaccine is produced.

We will just continue to make the best of our lives and keep smiling.

Two occasions that we will miss are the Harvest Festival and the Carol service that both take place at the Agriculture Centre. These are always good to go to where we see all our friends and enjoy the dinks, mince pies and oranges that Bagshaws kindly supply. These are now being on line (not quite the same atmosphere).

Reading in the *Farmers Guardian* this week it tells of the return of the doorstep milk man and how the lockdown has boosted the trade. The milkman has been part of the dairy market since 1860s. My Dad and Uncle Tom used to sell milk from the farm as did Michael's father; and then I took over and delivered in Youlgrave, Alport, Stanton, Middleton and Hartington with surrounding areas. It was a job that I really enjoyed, making many friends. We used to milk the cows, bottle the milk and then deliver. As you can imagine this was very tiring, especially when the family came along.

I used to put Dakin in his carry cot in the back of the milk van among the crates of milk and he would happily lie there getting lots of attention from the customers. I did not realise that was crazy and dangerous to do that until many years later. When Hannah arrived two year later I sold out and concentrated on breeding cattle for beef.



This photo is from the 1940s and the man in the photo is Mr Luther Shimwell senior, Michael's father. The Shimwell family had eight milk churn wagons that used to pick up all round the area, taking the milk to Chesterfield, Manchester and Sheffield dairies. This continued until the 1960s when tankers took over, at which point they went into general haulage, with Michael still carrying on with the business.

Marjorie Shimwell

Recipe of the Month: Brie and Caramelised Leek Tart

Ingredients

200g Plain or Wholemeal flour
120g butter
100g diced and chilled
1tsp olive oil
2 leeks finely sliced
1 tbs white wine vinegar
2 tsp caster sugar
5 eggs
2 tsp Dijon mustard
160g sliced Brie
200g creme fraiche

Method

Make the pastry the usual way using 100g of the butter and chill for about 20 mins.

Pre heat the oven to 220 or gas 7.

Roll out the pastry to fit a 25cm tin and cover the base with parchment and baking beans, cook blind for 20 mins. Remove the parchment and cook for another 10 mins.

Meanwhile heat the remaining 20g butter and the oil in a pan. Add the leeks and a pinch of salt and cook for about 20mins stirring occasionally until soft and turning golden brown. Add the vinegar and sugar turn the heat up a little and cook for 3-4 mins until slightly sticky.

Whisk the eggs in a large bowl then add the creme fraiche. Add the leeks, mustard and a pinch of salt. and pepper. Pour into the tart case and lay the sliced Brie on top.

Bake in the oven for 30-35 mins until set and lightly golden.

To serve scatter thyme leaves on the top.

Marjorie



Bakery – Cafe – Kitchen

www.peakfeast.co.uk

Moor Lane, Youlgrave DE45 1US

01629 630000

Advertise your local trade,
service or business in the
Bugle and reach 800 people
every month

Call Andrew on 01629
636125.

Generous discount for
repeat ads.

YOULGRAVE GARAGE

Tel. 01629 636943

Service & Repairs	MOT Testing	Diagnostics
Air Conditioning	Batteries	Brakes
Exhausts	Tyres	Accident Repairs
Petrol & Diesel	Paraffin	Logs & Sticks

Approved Garage Member

Approved Motor Industry Codes of Practice

www.youlgravegarage.co.uk

Granby House, Youlgrave

Do you live on your own and feel the need for more company and support, but don't want a care home?



At Granby House you can be as independent as you want. You can eat meals cooked by the staff, go on the many social events and treat your en-suite room as you would your own home. All rooms are connected to an alarm system and help can be summoned at any time of day or night.

If more assistance is needed, home help can be arranged. Financial support is available in the same way as it is in a private house. The weekly costs can be surprisingly modest.

If you are interested in hearing more about Granby House, please ring Pat Cleaver on 01629 636836 or email granbyhouse@gmail.com.



Podiatry Foot Clinic

(Trading Upstairs Loughran Hague Salon)

Matlock Street, Bakewell, DE45 1EE

Tel: 01629 259672 www.careforfeetuk.co.uk

On-line booking Home Visits Available

Medical Insurance Approved

Treatments including:



<i>Callus / Dry Skin</i>	<i>Corn Removal</i>
<i>Ingrown Toenail</i>	<i>Verruca</i>
<i>Fungal Nail</i>	<i>Heel Pain</i>



BAKEWELL OSTEOPATHY CLINIC

The conditions we can help you with include:

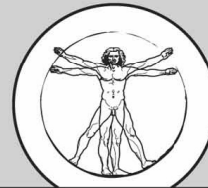
- HEADACHES & MIGRAINES
- NECK PAIN & WHIPLASH
- FROZEN OR STIFF SHOULDERS
- TENNIS ELBOW • SLIPPED DISCS
- REPETITIVE STRAIN INJURIES
- TRAPPED NERVES • LOWER BACK PAIN
- HIP, THIGH OR KNEE PROBLEMS
- POSTURAL CHANGES DURING PREGNANCY
- CHRONIC FATIGUE SYNDROME (ME)

The clinic is also a multi-disciplinary clinic and we offer the following therapies:

- OSTEOPATHY
- SPORTS MASSAGE
- HOMEOPATHY
- ALEXANDER TECHNIQUE
- NUTRITIONAL THERAPY
- HYPNOTHERAPY
- REFLEXOLOGY
- REIKI

CLINIC HOURS AND HOME VISTS:

The Bakewell Osteopathy Clinic is open each week day from 9.00am to 6.30pm (except Wednesdays) and every other Saturday from 9.00am to 2.00pm. We can also arrange home visits by special request.



BAKEWELL
OSTEOPATHY
CLINIC



CALL PHIL HELER:

01629 329009 | 07980 930755

7B Buxton Road, Bakewell, DE45 1DA

Youlgrave Wildlife Notes: October

In spite of a lack of frost, the autumn colours seem especially good this year with the yellow of the birches and the bronze of the beeches. It also appears to be a very good mast year. This means that beeches have produced a lot of beech nuts and oaks a lot of acorns. A lot of beech mast should favour the bramblings, the northern chaffinch that sometimes visits in large numbers during the winter. The jays should be enjoying the acorns, which they hide. As they have poor memories they do a good job planting new trees. With our ash trees, particularly the young ones, dying of ash die back we need as many disease-resistant species as we can get.

Our winter visiting thrushes, the redwings and fieldfares, have already been seen round the village in flocks of around 20 for redwings and over 50 for fieldfare. This year does not seem to be a particularly good berry year, however. Even my tree cotoneaster and holly which normally have berries well into December are looking rather bare. The blackbirds have eaten many of the berries already, not leaving many for the redwings that usually finish them off. Windfall apples will often attract fieldfares, so worth not being too tidy.

Garden birds are emptying our feeders at a great rate. Greenfinches are plentiful and there seem to be a lot of coal tits this year. There was a goldcrest in our garden recently. The occasional kingfisher has been seen near Alport and dippers seem to have



Redwing eating cotoneaster.

increased in numbers recently. They are already singing with their remarkably loud song. Fish-eating goosanders have been seen on the river and there were six females on the new Dam recently. Three red legged partridges have been strolling round farm entrances along Conksbury Lane. These non-native birds are bred for shooting, so these are showing a degree of intelligence not normally associated with game birds.

Buzzards are common and tawny owls have been seen and heard. The "toowit" and the "toowoo" parts of the familiar call are actually made by a female and a male calling to each other. "Toowit" is the female call.

Early in the month hedgehogs were still active and being fed above Alport, three coming regularly for their dinner.

Continued next page

LOCAL COMMUNITY GROUPS & ORGANISATIONS – SPONSORS

Bradford River Action Group, 636189

Granby House, Housing for older people, 636836

Middleton & Smerrill Parish Council

parishclerk@middletonbyyoulgrave.org.uk, 636151

Middleton by Youlgrave Village Hall

villagehall@middletonbyyoulgrave.org.uk, 636532

Youlgrave Badminton Group, Thurs 10-12 noon, Village Hall, John Youatt 636241

Youlgrave Bellringers, 636576

Youlgrave Bowls Club, contact Sharon Sansom, 636712

Youlgrave Cinema, 636836

Youlgrave Community Land Trust, 630070

Youlgrave Day Centre (Monday Club), contact Shirley Brassington, 636310

Youlgrave Methodist Church, 636558

Youlgrave Parish Church, 636576

Youlgrave Parish Council, 636151
youlgraveclerk@youlgrave.org.uk

Youlgrave Preschool, 07494 522615

<http://youlgravepreschool.org/>

Youlgrave Reading Room, 636477

Youlgrave Scout & Community Youth Hall, 636887

Youlgrave Silver Band, Thurs 7.30pm
Methodist Hall, Learners 7pm, 630202

Youlgrave Village Hall, 01629 828215,
enquiries@yvh.org.uk, www.yvh.org.uk

Youlgrave Welldressers, 07899
920204

Youlgrave Wesleyan Reform Chapel, 636251

Youlgrave Women's Institute, 636734

Youlgrave Waterworks Ltd

James Bacon (leaks) 07866 365610

Admin matters: 07483 875719

email: waterworks@youlgrave.org.uk

THE BUGLE: Andrew McCloy (Editor), Englemere, Brookleton, Youlgrave, Derbyshire DE45 1UT tel 01629 636125, email andrew.mccloy@btinternet.com
Printed by Matlock Print, Mercury House, 24 Bakewell Road, Matlock, Derbyshire DE4 3AU (tel 01629 582766) www.matlockprint.co.uk.

The views in this publication are not necessarily those of the editorial team.

Hopefully they are now nice and fat and hibernating.

A huge toad was found under our veranda. It was transported to some shrubbery near our new pond.

An unusual visitor, a humming bird hawk moth, came to New Road late in September. These are migrants from the continent and have not been common this year. They hover, motionless, by a flower and suck the nectar. Rather like humming birds.

On 23rd October I found 26 species

of wildflowers in bloom. Many are just odd ones, but the autumn hawk bit, yarrow, ivy leafed toadflax and spring sandwort are still flowering well.

My thanks to this month's contributors: Simon, Jane, Pat, Anne, Helen, Lisa, Paul, Tom and Ian.

Ian Weatherley

Email 48iweatherley@gmail.com

ANNUAL SPONSORS: BUSINESSES & TRADERS/PROFESSIONALS

Pubs & Accommodation

Apple Tree Cottage

1 double bedroom self-catering, accommodation on Main Street.
www.holidaylettings.co.uk/rentals/youlgrave/271801

Bull's Head Hotel

Fountain Square, Youlgrave, 636307
bullsheadyoulgrave@gmail.com
www.thebullshead.youlgrave.co.uk/

Hopping Farm

Caravan Site, Mrs M. Frost, 636302

The Old Bakery

B&B and self-catering accommodation
Church Street, Youlgrave, 630005,
kenclayton@mail.com
www.theoldbakery.youlgrave.co.uk/

Peak Pods

En-suite glamping pods, Alport, 636874,
www.peakpods.com

Smerrill Grange

Bed & Breakfast, 636232
alisonyates267@hotmail.co.uk

Driving & Motoring

Youlgrave Garage

Motor engineers and MOT Test Station, 636943

Shops, Cafes & Home Delivery

Amy's Dairy

Fresh glass bottled milk & orange juice, free range eggs, cream and yogurts, 636639 & 07799 880740

Peak Feast

Bakers of delicious cakes, pies and treats, The Workshop, Moor Lane, Youlgrave, 630000,
www.peakfeast.co.uk

Youlgrave Village Shop

Well-stocked convenience store, hot and cold takeaway food, including breakfasts, 630208

Youngs of Youlgrave

Post Office & Village Store, newspapers, magazines, cards, stationery & general groceries, plus free cash withdrawals and deposits, 636217

Other Local Services

Jo Copeland, Mobile Professional Hairdresser

Precision cutting, colouring, perming and styling, 07711 255004

Iris Pimm, Yoga

The Barn, Greenfields, Alport, 07890 381155

Building and Interior Services & Supplies

JDB Plumbing & Heating

James Bacon 07866 365610

Michael Arthur

Supply, design and project manage installations of kitchens, bedrooms and bathrooms, 01629 258090
www.michaelarthur.co.uk

Derbyshire Aggregates

636500
www.decorativeaggregates.com

T. Nutt & Sons

Supply and fit carpets, vinyl, wood, laminate and karndean, 01246 863148, www.nutt.co.uk

Kathi Roche, Woodwind instrument repairs

636179, kathirepairs@hotmail.co.uk

Judith Orchard, Clothes alterations and beekeeping/swarms, all proceeds to Bees for Development charity 630202

Graham Elliott, Derbyshire Dales District Councillor, 636943/636318