



The Bugle



**A chance to blow your trumpet for the villagers of
Alport, Middleton and Youlgrave**

No. 225

May 2020

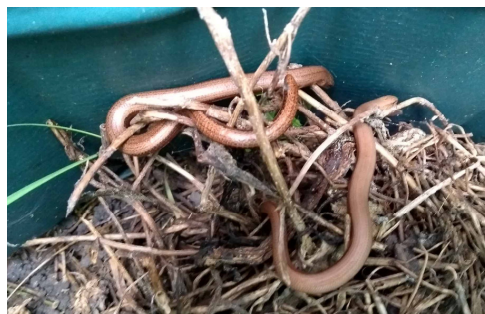
Residents celebrate local nature

Wildlife Notes for April by Ian Weatherley

Spring is here, the sun has been shining and we are in lockdown! Permitted exercise has, however, resulted in the highest number of wildlife reports ever for this long-running Bugle column.

My wildflower survey, on a fixed route, identified 51 species in bloom. To this can be added flowers such as early purple orchids, moschatel and wood anemones that are in bloom but not on my survey route. The number for April last year was 34. The fields are yellow now with dandelions, an excellent early nectar source for bees, and the goldfinches have been enjoying the seeds.

Meadow buttercups will soon replace them, but the only species I found this month was the rather local bulbous buttercup. You can distinguish it from other buttercups by the turned back sepals under the flower. The tiny rue leafed saxifrage is still blooming in cracks in our patio, but the much larger meadow saxifrage is now starting to bloom in large numbers on old spoil heaps and some meadows. Golden saxifrage is forming yellow carpets in damper parts of the Dale along with kingcups. Forget-me-



Slow worms in the compost heap (photo by Ian Thurman).

notes and bluebells are turning woodland floors blue. One of our two nationally rare lead worts, alpine penny cress, is blooming well by Icky Picky and other spoil heaps. You may have noticed the large pink areas in the fields to the left of the New Dam track. This is red deadnettle.

Frogs started to lay their spawn in early March and the toads have been singing and laying their strings of eggs in the New Dam. Perhaps the reduced traffic has resulted in fewer being squashed? Our only local reptile, the slow worm has been basking in the sun. Though it looks like a snake and is therefore disliked or even feared by

Continued page 4

A1 TAXIS



Accounts Welcome
All Airports Bookings
Advance Bookings
Nightouts, Weddings and Parties

6 - 8 Seater Specialists

075 9691 7373

Credit/Debit Cards Accepted

YOULGRAVE GARAGE

Tel. 01629 636943

Service & Repairs	MOT Testing	Diagnostics
Air Conditioning	Batteries	Brakes
Exhausts	Tyres	Accident Repairs
Petrol & Diesel	Paraffin	Logs & Sticks

Approved Garage Member

Approved Motor Industry Codes of Practice

www.youlgravegarage.co.uk



- Supply & Fitting of all Domestic and Contract Carpets
- Supply & Fitting of Vinyl, Laminate & Karndean Flooring
- Supply & Fitting of Real Wood Flooring
- Supply & Fitting of Sisal and Natural floorings



- ❖ Guaranteed Workmanship
- ❖ Free Fitting Service
- ❖ Free Home Selection Service
- ❖ Moving & Replacement of Furniture
- ❖ Disposal of Old Carpet
- ❖ Customers' Own Car Park

43/47 High Street, Clay Cross, Chesterfield

Tel: 01246 863148



*See our **WEBSITE** at: www.nutt.co.uk*

Continued from front page

some, this is actually a legless lizard and should not be harmed. They are very vulnerable to cats, though. To tell a snake from a legless lizard, gaze into its eyes. If it blinks it's a lizard, as snakes don't have eyelids.

Hares have often been seen in the fields and both black fallow and roe deer have been reported. Hedgehogs have been about and even fed and I've found the tarry looking droppings on our lawn. Peacock, small tortoiseshell, brimstone, speckled wood, comma and orange tip butterflies have all been seen. The orange tips have been particularly common this year. This white butterfly is no threat to your cabbages as its food plant, hedge garlic, is abundant. Bats can be seen on warm evenings; and there are minnows in the river.

All our garden birds seem to be doing well. Fledgling blackbirds are appearing. These are in danger from cats, but if you see one don't think it has been abandoned by its parents. They will be around somewhere.

Some of our winter visitors, redwings and fieldfares, are being very reluctant to leave. They have been seen in the Greenfields area quite recently and I saw a flock of about 50 fieldfare on my bike ride on the 26th. There seem to be lots of warblers this year. I have never seen and heard so many blackcaps and willow warblers locally. We have also seen more redstarts than normal. Kites and peregrines have been seen and there have been two probable osprey sightings over the village.

Kestrels are often seen in the New Dam area and sparrowhawks have visited gardens. Buzzards are common. Barn and tawny owls have both been seen, even in daylight. Swallows were first reported on the 6th locally and the 7th in the village. Numbers so far are low, 8 being the highest. House martins were first seen on the 15th but few have been reported. On the river a kingfisher, the only one for ages, was seen near Alport. Grey wagtails, dippers and herons are usually present and mandarin ducks are appearing all over the place. Curlews

have been frequently heard and seen.

A white cock pheasant and red legged partridges have had several reports. The white peahens that turned up in Alport last month have now arrived in Youlgrave. It is a bit of a shock looking out of your kitchen window first thing and seeing an enormous white peahen, as happened to us!

There have been others, including a rather more colourful peacock. Finally, the swifts should be arriving about now. From previous year's data around the 8th of May, so please report any you see.

My thanks to my many correspondents: Cath, Peter, Simon, Pat, Lisa, John, Maggie, Ian, Gill, Ruth, Alison, Laetitia, Phoebe, Helen, Carol, Keith, Richard, Robert, Annabelle, John, Melanie and Carol. This is only a summary but all reports and photos go into my log and give a comprehensive record of local wildlife, now over 10 years.

Ian Weatherley
48iweatherley@gmail.com



White peahen on the roof.



Dear Editor

Following a week in Calow Hospital recently, my lasting memory is the smell of water. I already knew that we, in Youlgrave, have great water, but the water in the hospital smelled and tasted awful. There was nothing wrong with it, but it really brought home to me how lucky we are in the village. Enjoy it fresh from the tap or in a cuppa.

Val C
Bankside



Dear Editor

I am I am writing to make a request. In view of the current situation and suspension of the green bin collection could you please ask Youlgrave residents, very politely, if they will consider the asthmatics of the village and refrain from making garden waste bonfires? Apart from being anti social they pose a big health hazard to people who have breathing problems. The recent advice from the RHS is not to prune anything until September, when hopefully the collections and the tip will be functioning again.

Melanie Jennings
New Road



Dear Editor

I know plenty of people have already said this, but a massive "thank you and well done" to our village shops, bakery and garage for continuing to provide such a great service for local residents. I only hope that when all this is over as many people as possible will continue to support them and remember that in our hour of need they were there for us.

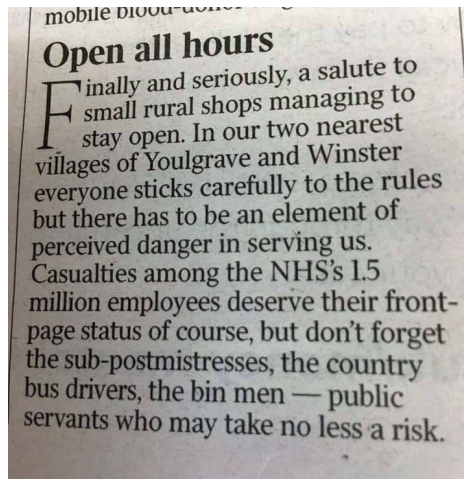
Name & address supplied



Dear Editor

Dog poo is becoming a problem in the village again, at least where I walk my dogs (the field at the bottom of New Road and along the top of Bradford Dale particularly). Many dog-walking neighbours are moaning about it and fed up of the bad reputation we're all getting because of a minority. The lockdown has proved that it's not visitors to the village that are the problem, it's people who live here that aren't picking up the poo. There is no shortage of poo bags in the shops at the moment, so there really is no excuse. It's not just unsightly, but smelly and messy when you find it on your shoe. It brings disease, too, and is potentially fatal to the livestock around us. Please everyone take care of our village. Thank you.

Kate
New Road



From *The Times* newspaper, 22nd April

www.youlgrave.org.uk

Current arrangements at Youlgrave Surgery

Patients wanting an appointment:

You should call the surgery as normal on **01629 636207**. You will be offered a telephone appointment on the day if the ailment is urgent or the next routine slot if not. A doctor will then call you to assess you over the phone. If it is deemed necessary you will be asked to attend surgery. All patients who are unwell with any infective symptoms will be assessed at Darley Dale Medical Centre in the Red Zone. This does not mean people with Covid-19 symptoms, they must remain self-isolated and if unwell and unable to manage at home then contact 111. Youlgrave and Winster will remain Green Zones so we keep unwell patients away from the dispensing sites.

Patients ordering prescriptions:

You are encouraged to do so by phone, email or via SystmOne online, rather than dropping a repeat slip off at the surgery. We have been asked not to issue extra scripts to protect the supply chain. Please only request medication if you need it. We will not issue scripts if not due, requesting early will only waste staff time.

Patient collecting prescriptions:

You are asked to call the Surgery on arrival and someone will bring the prescription out to you (we soon hope to have a functioning intercom system). We are asking patients who pay for their prescriptions to purchase a Prescription Prepayment Certificate if they are able, in an attempt to reduce contact with staff. These cost £104 for a year or £29.10 for 3 months. Please visit www.ppa.org.uk/ppc or call 0845 850 0030 to register for this system of payment.

As per Government guidelines we are encouraging all patients over 70 or who are vulnerable to self-isolate. For this reason we are asking for volunteers who would be willing to help us distribute medications through the village. Please email Carrie.Poole@NHS.net if you can help and a member of staff will then contact you.

How we are managing the situation is subject to change and we will attempt to keep patients up to speed with this, but please bear with us. We are working under extreme pressure, in unknown territory and would appreciate people's kindness and patience in these uncertain times.

As a final note, please practice social distancing and stop going out unless it is essential. This is not just the flu. It does not just affect the elderly, as young fit and healthy people have already died from this, including teenagers.



A chalked message on Stonesyde.

~ YOUR VILLAGE SERVICES ~

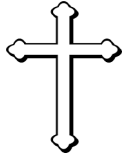
Youlgrave Post Office & Stores: We are offering a delivery service of papers at this time to save customers having to come out. We can also deliver any other product we sell to anyone who needs it at this time, including food and drink, confectionery and a range of household items. We are doing our best to keep the shop fully stocked at this time. For a delivery or anything please call Amy on 07799 880740; or the shop on 01629 636217; or email amytan@icloud.com

Youlgrave Village Shop: We are offering doorstep deliveries with cash, cheques or BACS payments and we can collect items from other village shops, doctors, etc – just phone the shop on 01629 630208. No minimum spend, free deliveries. The shop continues to sell hot and cold snacks, drinks, cheese, meat, fresh fruit and vegetables and baking products, as well as a range of high quality deli items. Stay safe, Jade.

Peak Feast: Our current opening hours are 0900-1200. Please message us with your order so we can do all we can to reduce social contact. Your order can then be collected from the bakery, or where possible we can provide a doorstep service. Our range include homity pies (gluten free and vegan available, individual or family size), mushroom & chestnut pie, luxury ready meals (sweet potato mushroom & spinach curry, mushroom & puy lentils in red wine, butterbean stir fry, chilli NON carne, chickpea samba, vegetable dal); and sweets, including flapjacks, chocolate brownies and Bakewell Tarts. We are still having bread delivered daily (advance orders preferred). Payments can be arranged via bank transfer or cheque. Contact us: www.facebook.com/Peakfeast, www.peakfeast.co.uk, 01629 630000, Moor Lane, Youlgrave DE45 1US.

Peak District Deli: We have an online shop where you'll find food and drinks, all produced in the Peak District. We provide a convenient delivery service with your order too, think of us like your local farm shop on wheels. You can place your order and have it delivered two days later. From Tuesday through to Saturdays we will be leaving food, drinks and other essentials in safe places or on doorsteps. The website is easy and safe to use and we don't need to have any physical contact. We have also just launched a wide choice of ready meals where you'll find vegetarian dishes from Dawn at Peak Feast. <https://peakdistrictdeli.com/>

Youlgrave Garage: Due to the ongoing uncertainty around the full impact of Coronavirus, we will now offer an additional service to local customers with regard to car repairs, servicing and MOT tests, should they be concerned at this difficult time. Park as near as you can to the garage, put your keys, contact details, address and any other information together and put them in the letterbox in the shop doorway. Once repaired, we will return your car to your home address and put the keys and invoice through your letter box. Payment can be made by either phone call or BACS payment. We hope that this will ensure we can continue to serve and keep your wheels turning during this difficult time.



The Youlgrave Churches

After six weeks of lockdown, some of us are worried for sick or vulnerable family or for the future of our jobs or businesses. Parents with bored or frustrated children face challenges – see below. Some of us thank God that we have been able to enjoy walking or gardening in the beautiful spring weather. The village's gardens have never been so well kept!

The churches remain closed for the time being – the only activity permitted is interments in the churchyard in the presence of immediate family. Although we cannot meet for worship, the resident clergy are producing 'Sunday service' materials for each Sunday – reading, reflection, prayers – and daily evening prayer for those who would like to read it in their own homes. Church members are circulating their own stories and pictures of faith. In a small way we are rediscovering the origins of the Christian faith, which began by meeting in homes, not in churches. These materials are being circulated by email, but you can ask for a paper copy to be delivered to you if you are not on email. Please contact Jane – the clergy contact details are below.

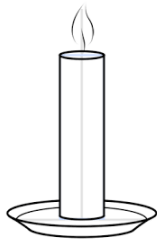
Daily Hope free phonenumber from the Church of England

A week ago a phone line service was launched for those in the church community who do not have access to email or the internet. You may have had a post card with the information on it delivered by Geoff or Jane. If you would like copies of the post card let Jane now and she will pop a couple through your letter box.

*The line will be available 24 hours a day on **0800 804 8044**.*

It is a simple new way to bring worship and prayer into people's homes while church buildings are closed. Callers will hear a special greeting from the Archbishop of Canterbury before being able to choose from a range of options, including:

- *Prayer During the Day and Night Prayer updated daily*
- *A recording of the Church of England's weekly national online service.*
- *Hymn Line - a small selection of hymns, updated daily*
- *Hymns We Love - a hymn and reflection*



A Prayer for ourselves

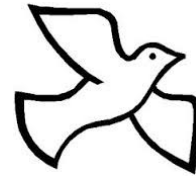
Christ be with me, Christ within me,
Christ behind me, Christ before me,
Christ beside me, Christ to win me,
Christ to comfort and restore me.
Christ beneath me, Christ above me,
Christ in quiet, Christ in danger,
Christ in hearts of all that love me,
Christ in mouth of friend and stranger.

Attributed to St Columba of Iona

Prayers of thanksgiving and intercession – some applying very much to local needs

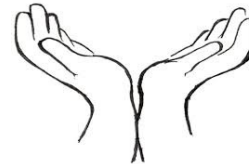
For the health workers tending the seriously ill
for the scientists working on a vaccination
for the researchers analysing data and identifying trends

for the media outlets working to communicate reality
for the supermarket workers, hygiene and sanitation providers
for the good news stories of recoveries and effective planning
for the singing from balconies by locked-down communities
for the recognition that isolation doesn't need to mean loneliness
for the notes through letterboxes offering help and support
for the internet and telephones and technology that connects
for the awakened appreciation of what is truly important
Thanks be to God.



For those who are unwell and concerned for loved ones
for those who were already very anxious
for those immune suppressed or compromised
for those vulnerable because of underlying conditions
for those in the 'most at risk to coronavirus' categories
for those watching their entire income stream dry up
for those who have no choice but to go out to work
for those who are afraid to be at home
for those who are more lonely than they've ever been
for those who are bereaved and grieving.
God be their healer, comfort and protection,
be their strength, shield and provision
be their security, safety and close companion.

And raise up your Church
to be your well-washed hands and faithful feet
to be present to the pain
to respond with love in action
if even from a safe distance.



Prayers for the school – contributed by Headteacher Heather Stelling

- The children; especially those who are particularly missing the safety and routine of their school day/week
- The families; especially those whose income has been affected by this pandemic; those who are finding working from home with a family challenging; and those who are finding the whole concept of 'home-learning' and 'lockdown' hard
- The staff team (including caretaker, cook, office staff, support staff, teachers and Heather as Headteacher) for their dedication and hard work in supporting families and children during these difficult times; especially in keeping school 'open' for the children of key workers, including over the Easter 'holiday' period
- One of the team has a family member who is critically ill with the virus... "and it's tough"
- 'Vulnerable families' in the village

Rev Geoff Clay geoffclay@me.com 07833 252803 01629 636591

Rev Jane Clay ejaneclay@icloud.com 07802 630877

Rev Richard Tucker rev.richardtucker@gmail.com 01629 636074

Lockdown: Time for a cuppa or a nice whisky with a drop of water?

Reading my e-mails and attachments from the Royal Society of Chemistry prompted me to write to residents regarding the supply of your water, whether it be Youlgrave Water or Severn Trent Water.

1. Can coronavirus (COVID-19) be spread by water?

COVID-19 is a virus with an envelope. Enveloped viruses are generally less stable in the environment and are more susceptible to disinfectants which act as oxidants. Effective inactivation can be achieved using common oxidising disinfectants such as chlorine or sodium hypochlorite which are used to treat drinking water before supply.

2. While some buildings are closed indefinitely to prevent the spread of COVID-19, water left sitting in pipes could change in quality.

Premises that have been closed or partially closed during the COVID-19 pandemic can pose a significant risk of causing problems when reopened unless suitable precautions are taken. It's possible that water left sitting for long periods of time could contain excessive amounts of heavy metals and pathogens concentrated in pipes. Procedures may need to be implemented at the re-commissioning stage.

Brian Wardle

UPDATE FROM YOULGRAVE WATERWORKS: Due to the slowing down of Court Claims Centre decisions, your Waterworks has given bad debtors until early June to pay up arrears from last year, but will be sending forms to Court direct thereafter if no contact has been made with us by then. Consumption is up as expected with everyone at home and only emergency works are being carried out at present apart from the daily checks on the system.



DDDC: No green bin collection until further notice

The current situation (as of 4 May) is that all scheduled household waste and recycling collections are happening, but garden rounds (green bins) are suspended until further notice and food is being collected on the grey bin/black sack rounds. If your blue or grey bin/black sacks are not collected please notify DDDC on-line at: <https://www.derbyshiredales.gov.uk/environment-and-waste/bins-recycling/missed-collections>

Derbyshire County Council has announced it plans to reopen local household waste recycling centres soon, but it hasn't confirmed a date for this yet.

IS THIS YOUR BOTTLE?

Were you the person who drank a bottle of pop, or something stronger, at the top of the allotments some years ago? What were you doing at the top of the allotment? Where did the bottle come from? Did Youlgrave have a lemonade or pop cart?

Can anybody help solve the mystery?

If you can, contact Edwina on 01629 636491 or e-mail edwinaedwards07@btinternet.com



Latest news from Youlgrave W.I.

Although our W.I. has been dormant for a while, there is no lack of concern for members past and present, our neighbours, and many families and individuals we have never met. Nobody should feel alone, though there are many who live alone.

Keeping active, chatting from a distance, and visiting our wonderful shops and services all help to preserve a better level of coping during these difficult times.

In May, we would have held our Resolution Meeting and AGM. Four members were looking forward to the June National Annual meeting at the Albert Hall. The April competition for best plant photograph would have been hard to judge now with all the hours spent tending to our borders! Our friends in Stanton and elsewhere have been busy making headbands for the NHS to wear under their PPE, and the Pommy knitters have produced many blankets for the Jessops Maternity Wing, with all donated wool now distributed. Donations to various causes have been willingly made, and gardens are looking amazing while some homes have undergone a total blitz, so I'm told!



Headbands made by our Stanton members.

The good weather has lifted the spirits, and every person you speak to has voiced their appreciation of our beautiful surroundings with many walks on our doorsteps. A WI members' newsletter will be sent out shortly. Our intended activities will be resumed, and Life and Friendship will be celebrated.

Keep safe everyone.

Liz Hickman

Youlgrave Annual Parish Meeting 2020

Meeting not held due to Covid-19 restrictions

CHAIRMAN'S REPORT

Once again, a big thank you to all parish councillors and our clerk for all the work and that has been completed this last year. I don't intend mentioning the everyday jobs that have been done, just the more notable issues

Unfortunately, we suffered more vandalism on the Alport Lane Playing Field. One of the toilet doors was broken beyond repair and had to be replaced at some considerable cost. Toilet seats were broken and toilet roll and a holder were set on fire, plus other unspeakable events. There were broken beer bottles outside the Pavilion and the handrails were damaged and fires started. Please report any sightings of vandalism to the police using 101 (it's available 24/7).

We have discussed the use of CCTV in hot spots and should vandalism persist – your views would be appreciated. Please speak to any Parish Councillor.

On a lighter note, our thanks go to Judith Rimmer and the ladies of Youlgrave WI who carried out two litter picks around the village during the year. The result was several bags of rubbish collected. A good job well done. Council received a small grant from Derbyshire County Council (DCC) which enables us to loan out the litter-picking equipment for any group wishing to carry this out.

Council welcomed the creation of a youth group supported by the Parish Council. We have a qualified youth leader and helpers and are currently based in the Pavilion. We expect it to



be self-funding within the next few months and also go some way to help reduce vandalism. The group has received a small grant from the District Council's local project fund to help get things moving.

Allotments are running well with no vacancies at the present time. Some fencing has been replaced in the allotment car park with more to be replaced later this year. The damaged fencing around the tennis court has not yet been addressed. Further thought is needed on this one. The cycle track has been well used and may need a little attention later in the year. The Royal Oak Tree is doing well and continues to be looked after by Cllr Rob Scott. The keep fit equipment remains popular with all age groups. Following a number of requests, we may have to consider another seat adjacent to the equipment at the bottom end of the field

We are still pressing DCC to complete the agreed work following our road safety survey. Some completed but more to come.

Overweight HGV movement through the village is still a major problem. Photographic evidence showing number plates is preferred. It only takes five minutes to report to DCC Trading Standards on their website. Upon conviction, fines to both the driver and vehicle owners run into hundreds of pounds each. Hitting the pockets of both drivers and owners seems to be the only option.

The issue with parking across the front door access to Hall Cottage opposite the Post Office has finally been accepted and agreed by the County Council and the white line is to be extended. The yellow lined bus bays have also been extended.

Council agreed to undertake a housing needs survey following a presentation by Derbyshire Dales District Council's housing enabler.

The biggest gripe, however, is that when housing becomes available in Youlgrave it appears in general to be filled by persons from outside Derbyshire. This does not help in the quest to provide local needs families with housing within the village.

The biggest project ever undertaken to date by YPC is our new store and toilet facility in our Coldwell End car park. It was built by local tradesman with full disabled facilities. This was opened by Mrs Eileen Lowe on November 23rd last year. The second car park at Coldwell End is now open and hopefully will keep a few more parked cars off the road. Just to be clear, this has been built by proceeds from the honesty Box in the Coldwell End car park together with grants from DCC and Awards for All. It is a village asset that will stand for many years to come. An additional honesty box has been added which continues to attract payment.

Our clerk, Matthew Lovell, is constantly searching for grants that will allow us to progress various projects that are in the pipe line, including the resurfacing in the top car park and replacement play equipment at Coldwell End.

As I write this, the world is currently in uncharted waters. Please follow government guidelines and we will hopefully resume normality sooner rather than later. But, now six weeks into lockdown, I would like to thank you all for doing your bit in getting to grips with this pandemic. It has been, and still is, a hard slog for many, but hopefully the situation will ease within the next few weeks. But will everything be the same? Who knows, but let's give it our best shot.

My thanks to the village shops and businesses who have managed to maintain some degree of normality and provide a lifeline for many, particularly our elderly. We are very lucky to live where we do, you are all very much appreciated, thank you.

Keep safe and well.



Cllr Graham Elliott
Chairman
Youlgrave Parish Council

Latest news: An HGV illegally driving through Youlgrave last autumn was reported to DCC Trading Standards. The driver of the vehicle was prosecuted last month (23rd April) and after tendering a guilty plea was fined £579 with costs of £115 and a victim surcharge of £57.

News from Youlgrave School

Children at Youlgrave All Saints' Primary School are making the most of being in the fantastic countryside during lockdown. Teachers have been setting work online which children can share on our new class blogs. It has been lovely to see lots of the hard work children have been completing at home! Here are a few examples of some of the brilliant work that has been produced.

RECEPTION: Elizabeth (below left) has enjoyed making her telescopes, she managed to pretend to be asleep for 2.06 minutes before she started laughing.

YEAR 1: Connie (middle) has made up her own actions for the story 'We're Going on a Bear Hunt'

YEAR 2: Jack (right) has been busy on the farm. Here is a pen he has made for his lambs.



YEAR 5:

Rowan has been listening to Metallica to give him motivation in order to get his work done. Rock on Rowan!

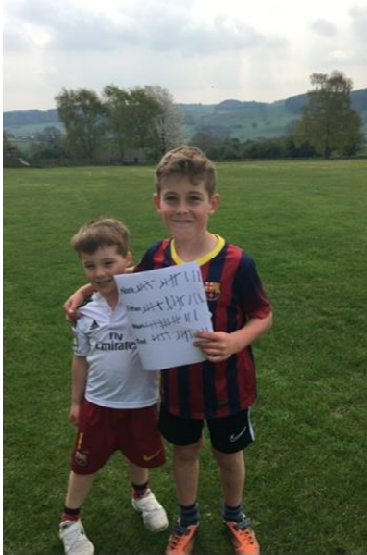
Nell (right) has completed a lovely science piece of work all about honeysuckle.

My overboard science from Monday!

Written by Nell Shearing from Class 2 Published on 23rd Apr 2020



- 15 -



YEAR 3: Ethan and Noah (above) ran 26 laps of the field (13 each) as part of the 2.6 challenge. They raised £200.

YEAR 4: Lilian has created some beautiful marbling.

Suminagashi - paper marbling

Written by Lilian Nash from Class 2 Published on 28th Apr 2020 Manage Post

This afternoon my sister and I tried out the Japanese art technique of paper marbling. We used marbling inks and a tray of water, dropped the colours we wanted into the water to create our designs then placed a sheet of paper on top of the water. Here are the results:



YEAR 6: Evie has made a fantastic scene in a box...

D.T - scene in a box

Written by Evie O'Neal from Class 2 Published on 24th Apr 2020 Manage Post



Scene in a box - a project For D.T. Making this taught me how to scale, put things in proportion and about perspective.

Well done everyone, keep up the fantastic work you are doing!

Miss Eaton

EYFS/KS1 Teacher





Church Farm Diary, May

None of us could have anticipated just how altered the world has become in a matter of weeks. We are all affected by Covid-19 in so many ways, but it can be easy to ignore when you are dealing with stock. Not even a pandemic can affect the day to day running when livestock is involved.

The milk sector has been hit with the price, because many dairy herds were producing milk for the hotels, cafes and restaurants and these have all been forced to close and therefore not wanting the milk. As you will have seen on the news, farmers have been pouring milk down the drains. It is all heartbreaking to see. Luckily Dakin's milk mostly goes to doorstep deliveries.

Walking down the fields every morning very early is wonderful and watching the wildlife and the plants growing it feels like I am the only person on earth, because there is not another soul anywhere and the sky is clear of vapour trails. In some ways I am enjoying this solitude, but not having any contact with the rest of my family, especially the grandchildren and not been able to give them a hug, is very hard. We did have a quiz night on Zoom that was good, so all the family could talk together, but Dakin and family had trouble with the internet so couldn't join in.

Bakewell cattle market is still buyers only. You drop off your stock and then have to leave the market, so only the registered buyers are there and they stand apart from one another.

Marjorie Shimwell

Recipe of the Month: Fruit and Nut Fridge Cake

It makes about 16 slices.

Ingredients

*6 oz butter
4 heaped tbsp golden syrup
4 oz glace cherries
4 oz chopped dates
4 oz seedless raisins
4 oz walnuts chopped
8 oz digestive biscuits broken into large crumbs*

Method

*Line a 8in loose bottom cake tin.
Measure the butter and golden syrup into a heavy pan and heat up gently until the butter has melted, remove from the heat and leave to one side to cool.
Place all the remaining ingredients in a large bowl and pour the cooled sauce over and mix well until all coated.
Turn the mixture into the tin and leave to chill in the fridge for about 4 hours until set.
Turn out and cut into slices.
Delicious with that morning coffee or afternoon tea or anytime!*



Easter with Youlgrave Silver Band

As with all other village groups, the band has had no rehearsals or concerts, however our players have continued to meet virtually every Thursday under the diligent guidance of Caty our conductor to play together. A number of problems had to be ironed out especially as some computers had a time delay – so some players were behind others – just as in practices, maybe! Now we have to prepare to play solos, too, keeping everyone in practice. Good old Caty (perhaps not so much of the old).

Sandra and Archer and Max have been playing hymns from their gardens near each other daily to cheer everyone up. This lovely idea was developed for Easter Sunday morning when all eight resident members of the band and the three in Long Rake played easter hymns in succession in the morning. Many people came out to listen and the music rang out throughout the village, ending with Helen standing in the field near her house projecting her beautiful music over the village. Well done everyone.

We don't know what or when we will be playing again as a band, but you can guarantee the enthusiasm is there to take any and every opportunity to continue to represent the music in our village.

Judith (07734714227)

Bankside Wildlife Garden is bursting into life

Bankside Wildlife Garden is looking glorious. It's a mass of Forget-me-nots, cowslips, bluebells and of course the sounds of birds and the river down below. Both of the benches have been painted and are waiting for someone to sit on them. It's a perfect place to enjoy isolation in peace and tranquillity.

Heather has worked hard at cutting back and clearing, Eddie and Jon have done essential repairs to the summer house and benches and also installed the children's magnificent willow owl, and Maggie has been clearing the pond, replacing some of the essential water weed and topping up with rain water from the water butt.

As we have no visitors at the moment the garden is there for Pommy people to enjoy.

Maggie





Bakery – Cafe – Kitchen

www.peakfeast.co.uk

Moor Lane, Youlgrave DE45 1US

01629 630000



As a qualified holistic massage therapist I use a variety of techniques and myofascial release to ensure you receive the most appropriate treatment. Massage is great for releasing long held tensions and correcting posture, easing



@peakholistic
www.peak-holistic.co.uk
peakholistic@gmail.com
Lawn House, Stanton in Peak

Granby House, Youlgrave

Do you live on your own and feel the need for more company and support, but don't want a care home?



At Granby House you can be as independent as you want. You can eat meals cooked by the staff, go on the many social events and treat your en-suite room as you would your own home. All rooms are connected to an alarm system and help can be summoned at any time of day or night.

If more assistance is needed, home help can be arranged. Financial support is available in the same way as it is in a private house. The weekly costs can be surprisingly modest.

If you are interested in hearing more about Granby House, please ring Pat Cleaver on 01629 636836 or email granbyhouse@gmail.com.



Podiatry Foot Clinic

(Trading Upstairs Loughran Hague Salon)

Matlock Street, Bakewell, DE45 1EE

Tel: 01629 259672 www.careforfeetuk.co.uk

On-line booking Home Visits Available

Medical Insurance Approved

Treatments including:



<i>Callus / Dry Skin</i>	<i>Corn Removal</i>
<i>Ingrown Toenail</i>	<i>Verruca</i>
<i>Fungal Nail</i>	<i>Heel Pain</i>



BAKEWELL OSTEOPATHY CLINIC

The conditions we can help you with include:

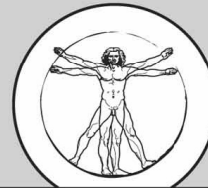
- HEADACHES & MIGRAINES
- NECK PAIN & WHIPLASH
- FROZEN OR STIFF SHOULDERS
- TENNIS ELBOW • SLIPPED DISCS
- REPETITIVE STRAIN INJURIES
- TRAPPED NERVES • LOWER BACK PAIN
- HIP, THIGH OR KNEE PROBLEMS
- POSTURAL CHANGES DURING PREGNANCY
- CHRONIC FATIGUE SYNDROME (ME)

The clinic is also a multi-disciplinary clinic and we offer the following therapies:

- OSTEOPATHY
- SPORTS MASSAGE
- HOMEOPATHY
- ALEXANDER TECHNIQUE
- NUTRITIONAL THERAPY
- HYPNOTHERAPY
- REFLEXOLOGY
- REIKI

CLINIC HOURS AND HOME VISTS:

The Bakewell Osteopathy Clinic is open each week day from 9.00am to 6.30pm (except Wednesdays) and every other Saturday from 9.00am to 2.00pm. We can also arrange home visits by special request.



BAKEWELL
OSTEOPATHY
CLINIC



CALL PHIL HELER:

01629 329009 | 07980 930755

7B Buxton Road, Bakewell, DE45 1DA

TAYLOR ELECTRICAL SERVICES

All aspects of electrical work undertaken

Apprentice trained over 10 years experience

Fully qualified & registered

Reliable & friendly service

07874 921091



TAYLOR ELECTRICAL
SERVICES
(07874 921 091)

Affordable Plumbing

Affordable solutions to all domestic plumbing requirements



- **No job too small**
- **Local service**
- **G3 certified unvented cylinder servicing**
- **Boiler servicing**

All work guaranteed · City & Guilds qualified · Fully insured

Contact Michael:

07850 652 838 / 01629 650929

affordableplumbing99@gmail.com

David Kenworthy – Joiner

All types of joinery work undertaken

FREE QUOTATIONS

- Glazing
- Doors & windows
- Garden Decking
- Flooring
- Purpose made joinery
- Fitted Kitchens
- Fitted Furniture
- Any General Home Maintenance Work, no job too small

Rose House, Youlgrave, Derbyshire
DE45 1UT

Call David: 01629 636574

Mobile 07791 185536

J.W. & J. Mettam Limited

*Family Funeral Directors
since 1899*

Ambrose House,
Granby Croft,
Bakewell DE45 1ET

(01629) 812114

Michael Arthur

Kitchens, Bedrooms & Bathrooms

Providing customers in Derbyshire with elegant kitchens, bathrooms and bedrooms they can be proud of. From supplying to installation, Michael Arthur covers all aspects from start to finish.



01629 258 090 | michael@michaelarthur.co.uk | www.michaelarthur.co.uk
Michael Arthur Limited | 23 Firs Parade | Matlock | Derbyshire | DE4 3AS
Open Monday-Friday 9am till 5pm, Saturday 9am till 4pm, Closed Sundays

 Find us on Facebook 

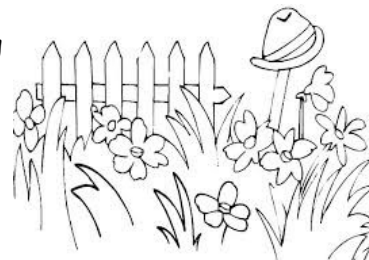
<p>BAKEWELL PET SUPPLIES</p> <p> Free Local Delivery</p> <p>Tel: 01629 814264</p>	<p> Mandy's Cattery</p> <p>Luxury purpose built indoor cattery Individual heated bedrooms and own exercise area Scratch poles, toys & cuddles FAB trained owner Nr Bakewell, Derbyshire</p> <p>Call Mandy Brown for more details: 07901 710767</p> <p>www.mandyscattery.com Email - mandy@mandyscattery.com</p>
---	---

Every flower counts... are you ready?

Leave your mower in the shed for #NoMowMay and let the flowers grow! Then count the flowers on your lawn and find out how many bees it can support.

Every Flower Counts will take place from Saturday 23rd to Sunday 31st May.

When it comes to providing vital nectar and pollen for bees, butterflies and other pollinating insects, every flower counts. And your lawn can help provide that feast. By taking part in this brand new citizen science action, we will show you how much nectar the flowers in your lawn are producing.



The more wild flowers you have in your lawn - and the more types of wild flowers - the more nectar will be produced. If you #SayNoMow and leave areas of your lawn unmown, you're likely to have many more wild flowers and lots more nectar.

<https://www.plantlife.org.uk/everyflowercounts/>

LOCAL COMMUNITY GROUPS & ORGANISATIONS – SPONSORS

Bradford River Action Group, 636189

Granby House, Housing for older people,
636836

Middleton & Smerrill Parish Council
parishclerk@middletonbyyoulgrave.org.uk,
636151

Middleton by Youlgrave Village Hall
villagehall@middletonbyyoulgrave.org.uk,
636532

Youlgrave Badminton Group, Thurs 10-
12 noon, Village Hall, John Youatt 636241

Youlgrave Bellringers, 636576

Youlgrave Bowls Club, contact Sharon
Sansom, 636712

Youlgrave Cinema, 636836

Youlgrave Community Land Trust,
630070

Youlgrave Day Centre (Monday Club) at
the Village Hall, 10am-3pm, contact
Shirley Brassington, 636310

Youlgrave Methodist Church, 636558

Youlgrave Parish Church, 636576

Youlgrave Parish Council, 636151
youlgraveclerk@youlgrave.org.uk

Youlgrave Preschool, 07494 522615
<http://youlgravepreschool.org/>

Youlgrave Reading Room, 636477

**Youlgrave Scout & Community Youth
Hall**, 636887

Youlgrave Silver Band, Thurs 7.30pm
Methodist Hall, Learners 7pm, 630202

Youlgrave Village Hall, 01629 828215,
enquiries@yvh.org.uk, www.yvh.org.uk

Youlgrave Welldressers, 07899
920204

Youlgrave Wesleyan Reform Chapel,
636251

Youlgrave Women's Institute, 636734

Youlgrave Waterworks Ltd
James Bacon (leaks) 07866 365610
Admin matters: 07483 875719
email: waterworks@youlgrave.org.uk



Andrew McCloy (Editor)

Englemere, Brookleton, Youlgrave,
Derbyshire DE45 1UT tel 01629 636125

e-mail andrew.mccloy@btinternet.com

www.thebugle.org.uk (past & special
issues) www.youlgrave.org.uk (current
issues).

Printed by Matlock Print, Mercury House, 24 Bakewell Road, Matlock, Derbyshire
DE4 3AU (tel 01629 582766) www.matlockprint.co.uk.

The views in this publication are not necessarily those of the editorial team.

The next issue will be out in the first week of June. Contributions to the above
address by Friday 29th May.



ANNUAL SPONSORS: BUSINESSES & TRADERS/PROFESSIONALS

Pubs & Accommodation

Apple Tree Cottage

1 double bedroom self-catering, accommodation on Main Street.
www.holidaylettings.co.uk/rentals/youlgreave/271801

Bull's Head Hotel

Fountain Square,
Youlgrave, 636307
bullsheadyoulgrave@gmail.com
www.thebullsheadyoulgrave.co.uk/

Farmyard Inn

Main Street, Youlgrave,
636221

Hopping Farm

Caravan Site, Mrs M. Frost,
636302

The Old Bakery

B&B and self-catering accommodation
Church Street, Youlgrave,
630005, kenclayton@mail.com
www.theoldbakeryyoulgrave.co.uk/

Peak Pods

En-suite glamping pods,
Alport, 636874,
www.peakpods.com

Smerrill Grange

Bed & Breakfast, 636232
alisonyates267@hotmail.co.uk

Driving & Motoring

Youlgrave Garage

Motor engineers and MOT
Test Station, 636943

Shops, Cafes & Home Delivery

Amy's Dairy

Fresh glass bottled milk & orange juice, free range eggs, cream and yogurts, 636639 & 07799 880740

Peak Feast

Bakers of delicious cakes, pies and treats,
The Workshop, Moor Lane, Youlgrave, 630000,
www.peakfeast.co.uk

Youlgrave Village Shop & Tearooms

Well-stocked convenience store, hot and cold takeaway food, including breakfasts, 630208

Yongs of Youlgrave

Post Office & Village Store, newspapers, magazines, cards, stationery & general groceries, plus free cash withdrawals and deposits, 636217

Building and Interior Services & Supplies

JDB Plumbing & Heating

James Bacon 07866 365610

Michael Arthur

Supply, design and project manage installations of kitchens, bedrooms and bathrooms, 01629 258090
www.michaelarthur.co.uk

Derbyshire Aggregates

636500
www.decorativeaggregates.com

Other Local Services

Jo Copeland, Mobile Professional Hairdresser

Precision cutting, colouring, perming and styling, 07711 255004

Iris Pimm, Yoga

The Barn, Greenfields, Alport, 07890 381155

Kathi Roche, Woodwind instrument repairs

636179, kathirepairs@hotmail.co.uk

Judith Orchard, Clothes alterations and beekeeping/swarms, all proceeds to Bees for Development charity 630202

Graham Elliott, Derbyshire Dales District Councillor, 636943/636318