



The Bugle



**A chance to blow your trumpet for the villagers of
Alport, Middleton and Youlgrave**

No. 210

November 2018

Bowling for Youlgrave

Tucked away in the far corner of the Alport Lane playing fields is the crown green bowls club – with arguably the most beautiful view in the Peak District. The club's 35 members, playing across eight teams, have had many successful seasons battling away for the honour of Youlgrave against local rivals in the Matlock and Chesterfield leagues. From Hathersage to Hope, Baslow to Bolsover, the bowlers have travelled far and wide representing the village.

It's a friendly and welcoming club with members ranging across the generations, from their 20s through to their 80s. The club performs better than might be expected for a village of our size, but continuing our success will depend on getting new members on the green next season. If you're interested in trying the game we'll be having taster sessions in April next year, on Monday nights.



League champions! Youlgrave A won the Matlock Thursday Friendly League Division 1 (see page 10 for full story).

Review of the 2018 season

Matlock Tuesday League Division 1, Youlgrave A: The Tuesday 'A' team can't wait for next season after a very creditable 3rd place, only 21 points behind Hope Works 'A' and 66 points adrift of the worthy winners, Matlock Park 'A'. Winning 17 of their 22 matches, they expect to be fighting for the top of the table next season. This performance was achieved despite the new captain, Ricky

Continued page 10

A1 Taxis Matlock



Accounts Welcome
All Airports Bookings
Advance Bookings
Nightouts, Weddings and Parties

6 - 8 Seater Specialists

075 9691 7373

Credit/Debit Cards Accepted

Bakewell Carpets

Wide range of carpets,
rugs and carpet tiles

Free fitting, free delivery

Free estimates

Home selection service

London House

Matlock Street

Bakewell DE45 1EE

Tel: 01629 814122

**Member of Parliament
for Derbyshire Dales:**

Patrick McLoughlin MP

Telephone: 0207 219 3511

E-mail:

patrick.mcloughlin.mp@parliament.uk

Post:

House of Commons

London SW1A 0AA



- Supply & Fitting of all Domestic and Contract Carpets
- Supply & Fitting of Vinyl, Laminate & Karndean Flooring
- Supply & Fitting of Real Wood Flooring
- Supply & Fitting of Sisal and Natural floorings



- ❖ Guaranteed Workmanship
- ❖ Free Fitting Service
- ❖ Free Home Selection Service
- ❖ Moving & Replacement of Furniture
- ❖ Disposal of Old Carpet
- ❖ Customers' Own Car Park

43/47 High Street, Clay Cross, Chesterfield
Tel: 01246 863148



See our WEBSITE at: www.nutt.co.uk



VILLAGE NOTICEBOARD

Youlgrave Methodist Church

COFFEE MORNING



Saturday 17th November

10.30am to 12.30pm

Christmas Gifts - cards - home bakes -
and much more

Make a Christmas table decoration with
Maureen

A warm welcome to all

CHRISTMAS CRAFT FAIR

Saturday 8th December

Youlgrave Village Hall

10am-4pm

To book a table ring Lynn on 636919.



Free entry includes tea and
coffee. Fund raising for
Youlgrave Village Hall.

Charity no 520538

GOING FREE

Worm composting bin (including
worms!) going free to a good home,
636895.

Aluminium staging going free to a
friendly greenhouse, 630213.

Youlgrave Concert Group

Join us for our next Concert in Sheffield City
Hall on Friday 30 November.

Return travel by the Community Bus and a
ticket in the stalls for just £32. Pick up at
Holywell Lane and The George.

The Czech National Symphony Orchestra are
playing:

Smetana The Bartered Bride: Overture
Chopin Piano Concerto No. 1 played by
Nikolai Demidenko
Dvorak Symphony No. 9 "From the New
World"

Conductor Heiko Mathias Forster

Visits to two more concerts are planned for 8
March and 10 May 2019. For further
information or to book, contact by 9 November
latest please, either Ian Bishop, tel 636168,
contact@bishopi.plus.com or

Peter Ryder, tel 636266, ryder908@btinternet.com

Horticultural Show trophies – information required

*During the 1960s, and more recently, two
trophies were awarded by my parents for
presentation to winners of two classes in
the annual Youlgrave Horticultural
Show. Since there has been no annual
Show for a number of years I have tried,
without success, to determine the
whereabouts of the two trophies. I am
writing through these pages to ascertain
where the trophies are to be found at the
present time so perhaps a decision might
be made as to their future use.*

*I shall be most grateful to receive any
relevant information on the matter and
thank you in anticipation.*

Brian Wardle
wardlebrian4@gmail.com
01629 636262

Headstones in the Churchyard – an important message from the All Saints' Church PCC

Back in July, as part of a national safeguarding initiative, and on behalf of the PCC (Parochial Church Council), a survey was carried out in our churchyard. The objective of this was to identify whether or not any of the headstones were unsafe. It is the family's responsibility to care for headstones but the PCC has a legal responsibility to ensure that headstones in the churchyard are safe.

The guidance provided regarding this is that if the stone moves significantly in response to a light touch, it should be regarded as unstable. Where we identified such stones, they were marked on the reverse side with a small cross of blue tape. The PCC would be grateful if anyone who has a family headstone in the churchyard which has been so identified would take the time to check whether remedial action is required and if so ensure that it is carried out. Please let the PCC know what action has been taken.

When we did the survey it is fair to say that we were surprised to discover



that the majority of unstable stones were the newer ones. In this case, the PCC recommends that families first seek the advice of individual stonemasons. Where it is not possible to contact any family member who has responsibility for the stone, the PCC will take appropriate action to ensure the safety of people walking in the churchyard. In the first instance this will be to lay the stone down. In fact, in some cases, where stones moved alarmingly when lightly touched, this has already been done and now every effort will be made to contact the families concerned.

It is important for everyone to realise that it is the responsibility of the family to ensure that their stone is cared for and remains stable and safe. The PCC will only assume its legal obligation where there is no longer any living relative reasonably traceable to take on the duty of care or where family members are unable to remedy the problem.

In accordance with the most recent guidance, regular surveys will now be carried out and information about new headstones will be issued as a matter of course when burials are arranged.

REMEMBRANCE SUNDAY

11th November 2018

The Royal British Legion will be holding their annual Remembrance Day Service in All Saints' Church at 10.45am and at Middleton-by-Youlgreave at 6.30p.m. All parishioners and visitors will be welcome.



"We Will Remember Them."

BAKEWELL PET SUPPLIES



Tel: 01629 814264



Mandy's Cattery

Luxury purpose built indoor cattery
Individual heated bedrooms
and own exercise area
Scratch poles, toys & cuddles
FAB trained owner
Nr Bakewell, Derbyshire

Call Mandy Brown for more details:
07901 710767

www.mandyscattery.com
Email - mandy@mandyscattery.com

Anne Hunt Driving School

**Driving Tuition
New Drivers
Refresher Courses**

Pass Plus registered
30 years experience

Lavender Cottage
Fountain Square, Youlgrave
annie@paua.fslife.co.uk
01629 636162 07792 059129

J.W. & J. Mettam Limited

*Family Funeral Directors
since 1899*

Ambrose House,
Granby Croft,
Bakewell DE45 1ET

(01629) 812114

David Kenworthy – Joiner

All types of joinery work undertaken

FREE QUOTATIONS

- Glazing
- Doors & windows
- Garden Decking
- Flooring
- Purpose made joinery
- Fitted Kitchens
- Fitted Furniture
- Any General Home Maintenance Work, no job to small

Rose House, Youlgrave, Derbyshire
DE45 1UT

Call David: 01629 636574

Mobile 07791 185536



FACES & FLOWERS

Wedding Make-Up
& Bouquets on request

ANDREA WILLANS

07942 922307

01629 636004

andrea@facesandflowers.com

PEAK FEAST

flavours you'll never forget

**The Workshop, Moor Lane,
Youlgrave**

Bakers of a huge range of Cakes, Brownies, Homity Pies, Gluten Free products, Luxury Ready Meals, Quiches & Tarts. We stock a great selection of fresh bread, cheeses, drinks, ice creams and a range of quality groceries.

Outside seating available, so please call in for a snack or a coffee and a slice of cake. Always served with a smile!

Mon-Fri 8am–5pm

Sat 8am–2.30pm, Sun 10am–4pm

www.peakfeast.co.uk dawn@peakfeast.co.uk

01629 630000 Like us on Facebook

R. Stone – Joinery

All types of joinery work undertaken

FREE QUOTATIONS

- Glazing
- Doors & Windows
- Hardwood/Softwood
- Flooring
- Purpose made joinery
- Fitted Kitchens
- Fitted Furniture
- Made to measure bespoke kitchens

3 Ivy Lane, Elton, Derbyshire DE4 2BX
rstonejoinery@gmail.com

Call Rob Stone on 07971 815683

What have the tourists ever done for us?

Ian Thurman on the spending value and potential of Youlgrave's visitors.

They park in daft places, drive too fast through the village and never spend any money... they put their boots on and then clear off for the day. Ever found yourself muttering about our tourist visitors?

Somewhat like the 'What have the Romans ever done for us?' sketch in Monty Python's *The Life of Brian*, it's easy to think ill of outsiders. But is the reality somewhat different? How do the residents of Youlgrave, by their sole efforts, create this miracle of three shops, three pubs, a garage and a social club in a village of just over 1,000 people?

Is there a possibility that tourists might have a bearing on our wealth of facilities when elsewhere shops and pubs are on a seemingly never ending spiral of closures? And could we actually get *more* money from these tourists?

How much?

In Youlgrave, Alport, Middleton and Gratton there are over 450 overnight visitor bedspaces*. It's reasonable to assume that the overnight population grows by around a third in peak holiday times. Whilst some of these people will inevitably bring their own food and drink, there's clearly an opportunity for significant spending in the pubs, shops and cafes from these overnighters. Then add in the day visits, wedding venues, visiting friends and family, and spending potential increases again. We all know from walking through the village and driving past the car parks at the weekend that the paths from the village attract substantial numbers of day-visitor walkers. And anyone who's moved here knows how popular you become with friends!

The Peak District National Park Authority



(PDNPA) commissions reports from a regular study (the STEAM report) on tourist spending. The latest estimates show some 13 million visitor days per annum** (2017) across the Peak District and an economic impact of £577m (2015). There are clearly substantial benefits from tourism; but what's in it for Youlgrave, we might ask? Comparing my estimate of the total bedspaces for Youlgrave and the local area to the total bedspaces in the Peak District*** used by the STEAM report, the visitors to the village and its environs are responsible for between 1% and 2% of the total economic impact of the Peak District's visitors, ie between £5.77m and £11.5m per annum. As our village streets aren't paved with gold and Chatsworth is round the corner, our visitors are likely to be having an impact both in Youlgrave and the rest of the Peak District. Nevertheless these are substantial amounts of money for the village to reach out for.

One thing is certain, if we don't embrace the tourist pound we will lose the pubs and shops that we really want to thrive. As Martin Hill from the Bull's Head says: "Tourists are very important to our

business, particularly for meals from April to September. It's our local friends who keep us going, particularly in the winter months. We really appreciate the support of people in the village but we couldn't survive without the visitor spending."

Clogging up the village, putting up house prices

Tourist activity is not without its downsides. Beyond the irritation of the parking congestion at busy times, there is the bigger issue of affordable housing. As one of the most attractive parts of England there's a demand for second homes and holiday rental accommodation. The same story is repeated across all of Britain's national parks. Such demands inevitably push up local house prices.

At its most extreme this can result in the exclusion of young locals from the housing market and a decline in school numbers. With the development of Hannah Bowman Way, some remaining social rental housing and a thriving primary school with 80 children, we are in a much better position than 'honeypot' villages such as Castleton and Hartington. (Castleton Primary School has just 5 pupils left and Hartington 18, in part because of the absence of young permanent residents.) Of course that's not to say we should be complacent.

Whilst we may feel that Youlgrave suffers from some of these problems, it's by no means as bad as elsewhere in the Peak District. Long may it remain so.



Come on, you can afford more than that!

In the spirit of localism, perhaps it's time for the local authorities to give everyone a better understanding of the benefits of tourist spending and help villages like ours to develop a toolkit to extract more money from our visitors?

In the mean time, what can we do as a village? 'Buy Youlgrave' has to be the message we get out to future visitors. Rather than letting overnight visitors organise their supermarket deliveries, or bring shopping with them, can we get the message out that our shops provide everything for their stay? We need to encourage all the accommodation providers to let their guests know, in advance, about our shops and pubs. And for the day visitors, many a small French village doesn't hold back from having a notice in the car park about what the shops sell, where they are and when they open. Should something similar be in our car parks? In a welcome first move, the Parish Council and Community Land Trust are to fund new finger post signs in Bradford Dale directing passing walkers to our shops, pubs and other services.

There's money walking in these hills, let's make sure we get our share.

**Bedspaces estimated from individual, agency and corporate accommodation websites including Airbnb and caravan sites. I suspect my data on bedspaces for our local area is more comprehensive than the STEAM bedspace data (monthly average of 25,000 bedspaces across the Peak District).*

***Excluding visits of less than 3 hours.*

****The geographical area used in the STEAM report is defined as the Peak District and Influence Area.*

Many thanks to David Alexander from the PDNPA for the supply of the headline STEAM statistics used above.

Bowls Club – continued from front page

Silk, struggling to get his team to understand him. Anyone have a Cockney to Derbyshire phrase book?

Youlgrave B: It was a difficult season for Youlgrave B struggling at the bottom of the Division.

Matlock Thursday Friendly League Division 1, Youlgrave A: For the first time in many a year, Youlgrave A, captained by Anne Prince, won the Division 1 title (see photo on front page). It was a runaway success as they won 18 of their 22 matches, including big wins over rivals such as Hope Works A & B, Tideswell and Baslow A.

Division 2, Youlgrave B: Captained by David Bird, Youlgrave B finished 11th in Division 2 with 9 matches won – in many close fought encounters. With deductions of 125 points for the season as a whole, fielding enough players was the biggest difficulty. As Youlgrave B is often the starting place for new players this team would really benefit from an increase in membership in 2019.

Chesterfield Saturday League, Youlgrave: For the Saturday team led by Paul Sansom, it's been a tough season with relegation from Division 1, despite winning 6 of their 9 home games. For Youlgrave to be in the top division for so many years was a great effort and staying up was always going to be a tough task. With a 10 singles format against some very strong teams it's a difficult league. However they're already looking forward to the matches on some new greens for next year in Division 2. Outside of the league, a team (with Matlock Park) was entered in the County Cup, where they made it to the final of the Repechage (1st round losers) competition.

Chesterfield Wednesday League Division 1, Youlgrave A: It's been a



difficult season for the Wednesday team, with a number of player withdrawals early in the season, hampering their progress. Despite their best efforts to put out a strong team, they were relegated from Division 1. However, their captain, John Wragg, expects a return to Division 1 if the team all pulls together.

Division 4, Youlgrave B: Winning 8 of their 10 home games at Fortress Youlgrave, the 'B' team finished in 9th position, easily avoiding relegation. Captained by Anne Prince, the team faced some difficult away greens but they won more matches than many teams finishing higher in the Division.

Chesterfield Veterans League Division 3, Youlgrave: It was a well-deserved 3rd place for the Vets this season. Ingrid Newman's team put in some very good performances, despite having only nine players available for most of the season. With help from other players in the club they've managed to achieve their best position for many years.

We need you to join!

And don't forget... if you're interested in coming along for a taster session, look out for details in the March issue of The Bugle. Or alternatively, if you can't wait to join, you can contact the club secretary, Sharon Sansom, on 636712 or by email at thebeeches01@btinternet.com.

News from All Saints' School, Youlgrave

E-SAFETY - SALT MINE THEATRE COMPANY'S PERFORMANCE

On the morning of Tuesday 2nd October 2018 all of our junior children walked down to Youlgrave Village Hall to watch a play performance about Internet Safety.

The Salt Mine Theatre Company performed a fantastic play about a little girl called Sarah who ventured into the forest all by herself. Whilst exploring the forest she met a 10-year-old boy called Wilf but he was a stranger. The forest was an analogy for the internet.



Throughout the story we learnt the importance of Internet Safety and the dangers of straying too far off the forest path. The moral of the story revealed three major rules:

1. Stay on age-appropriate games and don't go on websites you don't know.
2. Don't give anyone your personal information.
3. If you feel worried or scared call for an adult that you trust.

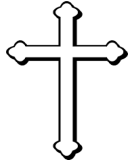
We also learnt if any bad viruses come your way it is best to either press the 'Block' or 'Report' button and never to trust someone that lies.



After the performance, the Salt Mine Theatre Company led a workshop with some fun and educational activities.

We all had such a good time watching the play and participating in the workshop, we didn't want it to end!

Written by Lizzie, Georgia, Nell and Lilian
(Class 2 Youlgrave All Saints' Primary School)



Churches in Youlgrave: Sadness and hope

On November 11th, Armistice Sunday, our Remembrance service will commemorate the ending of the First World War one hundred years ago this year. For the last four years, events across our nation have been leading up to this Commemoration. For me, the most poignant event has certainly been our trip in August this year, to Ypres and some of the First World War cemeteries.

I looked for the names of family members, as I think most of us did. I found several, none of whom had a known grave. I read, and was touched by, inscriptions on some of the gravestones; dedications to brave young men, many of whom in my eyes seemed scarcely past childhood. I felt, and feel, a deep sadness for so many thousands of lives so tragically cut short. But what touched me with the greatest sadness was that although we drove past countless cemeteries for the Allied dead, we saw hardly any memorials to the German dead. As I thought of my grandmother's brothers struggling and dying in the unimaginable horror of those battlefields, I could not help also thinking of the German young men who died there, courageous young men also loyal to their country and their comrades.

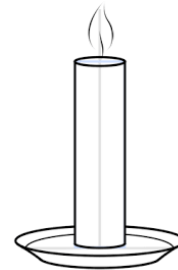
Sadly, that 'War to end all wars' did not end all wars. Brave and loyal armed forces have died on every side in every war since. And in my heart, I long for the leaders of all nations to discover what I suspect nearly all soldiers on the ground realise - that whatever our nations' differences, we always have far more that unites us than divides us. And so, as a follower of the Prince of Peace, I continue to pray that seemingly impossible prayer, that there will be an end to all hatred and all conflict, that humanity will know peace on earth.

Yours in Christ,

Louise Petheram
rev.louise.p@gmail.com 01629 636814

Please pray

For all those affected by conflicts past and present.
For the leaders of nations, that they may seek peace and justice.
For ourselves, that we may learn to live in peace with ourselves and one another.



Memorial candles at Christmas

If you would like to remember someone with a Memorial Candle in Church at Christmas, you can now order these. Please put 50p per memorial candle in a sealed envelope. On the envelope please write:

Donor: Your name

In memory of: Your loved ones name/s.

Sealed envelopes can be left at the Post Office or the Village Shop. Please order your candles before 11th December.

Unfortunately we can only supply memorial candles if we have received your 50p per candle to cover the cost.

If you have any questions, please contact Catherine Birch on 636083.

LOCAL CHURCH SERVICES IN NOVEMBER

See church websites or noticeboards for further detail

Sunday 4th November 9.30 am Stanton Morning Praise 11.00 Youlgrave Family Service 3.00 pm Youlgrave All Souls' Service 6.45 pm Evening Prayer at Middleton	Wed 7th November 10.30 am Youlgrave Communion
Sunday 11th November 10.45 am Youlgrave Remembrance Commemoration of Centenary of Ending of WW1 Acts of Remembrance 9.15 am Stanton 2.30 pm Birchover 6.45 pm Middleton	Sunday 18th November 9.30 Birchover Communion 11.00 am Youlgrave Communion 6.30 pm Youlgrave Evening Prayer
Sunday 25th November 9.30 Birchover Morning Praise 11.00 am Youlgrave Communion	Sunday 2nd December 9.30 am Advent Praise 11.00 Youlgrave Family Service 6.45 pm Advent at Middleton
Wed 5th December 10.30 am Youlgrave Communion	Friday 7th December 2.00 pm Stanton Family Service

Regular Sunday services at Methodist and Wesleyan Reform

10.30am Methodist, contact Margaret 636558

2.30pm Wesleyan Reform, contact Isobel 636251

Religious Society of Friends (Quakers), contact Jeni 636550 for details

It's that apple time of year!

The Youlgrave Gardeners and Beekeepers ran an Apple Crushing afternoon at the Village Hall on 7th October which positively ran with juice. It's a real apple glut year and ten people brought bags and boxes of apples to be crushed, and then left with bottles of juice which one person informed me was the "best apple juice ever tasted!" The pulp left over is intended for pigs and compost.



The equipment was borrowed from Transition Hope Valley and the willingness of everyone to feed the pulper and crush the crusher made for a friendly afternoon. Apple cake and spiced apple drink completed the productive scene.

The apple press in full swing.



There are still lots of apples left on our orchard trees. The main ones are Cox's for eating and Bramley and Laxton Superb for cooking. All these can be stored for quite a long time in a cool place. Please come and pick your own on a Sunday afternoon, 2.30-4pm when there is someone in the garden to point you to the right tree.

Also, we are running study evenings in bee-keeping over the winter. Anyone interested please contact Jeni Edwards.

For details see our blogspot under 'Youlgrave Gardeners and Beekeepers' or contact jeni.edwards69@gmail.com.

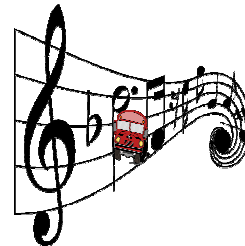
Tunes for Transport

Saturday 17th November at Bakewell Town Hall, from 6-8.30pm

An evening of Music and Singing in support of Bakewell & Eyam Community Transport

£5.00 adults, £3.00 under 14s. Refreshments and raffle. Tickets available from Bookend Book Shop, tel 01629 641920, or on the door.

Charity No 1049389



Youlgrave Parish Council report – October meeting

Youlgrave Parish Council met on 23rd October and were informed of the Derbyshire County Council Rights of Way Order PJ/37209 to create a Bridleway from Main Street, Over Haddon, via Lathkill Dale and Meadow Place to Back Lane. Council has written to the Director of Legal Services at County Hall Matlock DE4 3AG to express its support for this Order which will restrict passage to walkers and horses. The deadline for any representation or objection must be sent in by 5th November.

Progress on our new toilet block has stalled due to the mass of bedrock encountered, and rather than waste money on trenches the Council has reapplied to move the new block to the area adjacent to the old store and will turn the whole of the excavated area into car parking. Plans have been submitted and await planning approval. Other projects see works to improve the Limestone Way footpath and gates and a joint project will take place next month with the CLT to erect finger post signs in Bradford Dale to encourage walkers to explore the village and use local services.

Budget setting for next year is upon us with proposals being brought to our next meeting on 27th November.

Matthew Lovell, Youlgrave Parish Clerk
Tel 01629 636151, email youlgraveclerk@youlgrave.org.uk



The local Youlgrave Leprosy Mission support group is holding its annual meeting, like last year, at one of the monthly coffee mornings at the Wesleyan Reform chapel on Wednesday 21st November from 10-12noon. Leprosy Mission Christmas cards, calendars, booklets etc. will be on sale and Pamela Levens, the 'retired' (!) local rep, who has so often spoken to us & shown us a power point presentation, will also come and chat with us, talk about the present worldwide situation of leprosy and share time with us. If you have a TLM collecting box, please bring it with you or give it to Mary Turner or Barbara Scrivener before the meeting. We still collect used postage stamps so if you have some hidden at home bring them too. See you then hopefully and let's hope we can raise as much money as possible to help eradicate this terrible scarring, ostracizing disease.

Leprosy Mission Coffee Morning

At the Wesleyan Reform
Chapel, Youlgrave

Wednesday 21st
November,
10am-12.30pm

Bring and Buy Stall
Coffee & Biscuits

Please come and join us
and support this worthy
cause

Youlgrave Cinema presents: **Detroit** (Cert 15)

Friday 9th November, 7.30pm,
Youlgrave Village Hall

Free to members or £5 on the door

This film from 2017 is based on the Algiers Motel incident during the US city's 1967 12th Street Riot. Two days after riots and civil unrest in the city of Detroit, a report of gunshots prompts police and army forces to search and seize an annex of the Algiers Motel. A group of rogue police officers respond to a complaint with retribution rather than justice. The film follows both the night's incidents and the later lives of those involved. *Police/drama/history, 140 minutes*



Youlgrave Cinema presents: **Black Panther**



Cert 12A – under 12's
accompanied

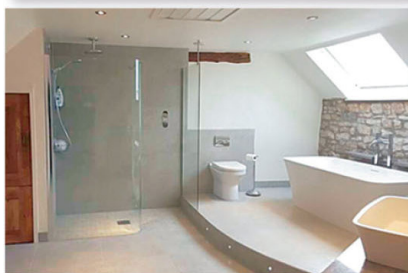
Friday 16th November,
7.30pm, Youlgrave Village Hall

Admission £1 for 2 adults and
up to 4 children

Centuries ago, five African tribes were at war with each other over possession of a meteorite filled with vibranium, the strongest metal in the universe. One warrior ingests a heart-shaped herb affected by the vibranium and finds that he is suddenly bestowed with super-human powers.

Michael Arthur

Kitchens, Bedrooms & Bathrooms



We supply, design & manage
kitchen, bedroom & bathroom installations



01629 258 090



23 Firs Parade, Matlock DE4 3AS
www.michaelarthur.co.uk

Youlgrave Wildlife Notes: October

Our Indian summer has produced some interesting sightings. Around the middle of the month a hummingbird hawk moth was seen feeding on petunias along with a small copper butterfly. There were also a number of brand new looking red admiral butterflies. The downside of this is what will happen to these as the weather gets colder. Humming bird hawk moths migrate to us from Europe, so little chance of that one surviving. Red admirals also migrate to us, but may at least go dormant in the winter, so maybe a chance there. The small copper spends the winter as a caterpillar emerging as an adult in early May. It has been a good year for this butterfly. Our two main species wintering as adults, the peacock and small tortoiseshell, seemed to have headed for their usual wintering sites, eg the church tower, very early. There seem to be very few there now, but a lot of dead wings, so perhaps not so good.

One plant that has had a late flowering has been a patch of storksbill on the Limestone Way between the Middleton and Long Rake roads. This little cranesbill has a rather local distribution.

Bird life has been rather quiet, though dippers, grey wagtails, the occasional pied wagtail and herons have been present along the river. There is a cygnet on the dams (not the same one as last year, as that would be white by now). The kingfisher has been spotted frequently along much of the river. In the garden goldfinches and greenfinches have been going through the seed at a great rate,

along with chaffinches, tits and sparrows. The dunnocks, though inconspicuous, are certainly busy under the hanging feeders and visit the bird table for sunflower hearts. I don't think we have the same quantity of blackbirds this winter, but this may be because the winter visitors have not really arrived in the village yet. They are on their way, though, as I saw a big flock of fieldfare over the Eastern Moors on the 25th. There will be plenty of berries for them when they do get here and lots of fallen apples for the fieldfare.

There have been plenty of buzzards over the Dale, some quite noisy, and the occasion kestrel has been seen. I haven't



Humming bird hawk moth

actually seen a sparrowhawk lately, but there have been some little piles of collared dove feathers. Tawny owls have been hooting. The dead animal mystery (see last month's article) has probably been solved. I sent

photos to two local wildlife organisations, but have received no reply. However a witness did see white on its face before it was damaged and an earlier photo was taken showing this. So, either a polecat or polecat/ferret cross, though where the body went is still a mystery. Polecats have been seen in that area before, though not for some time.

My thanks as always to this month's contributors, Simon, Vince, Sue and Laetitia and all observations and indeed questions gratefully received.

Ian Weatherley
48iweatherley@gmail.com



WI entertained an appreciative audience



A great audience enjoyed a truly great Show at All Saints Church in late September (see photo above). This free event helped to raise funds from donations for the Church and for the Choir's expenses, so we can hopefully look forward to more such entertainment. Nicola Humphreys ably conducted the singing, including Donkey Riding, the lovely African lullaby Soualle, also a well-known song from 'Joseph', ending with three Sound of Music favourites, joined by the audience in an emotional Edelweiss. Blended in with the singers, we heard two amazing recorder sessions, a ragtime piano duet, very amusing monologues, two poetry renditions and moving solo songs plus a solo Tenor horn and somehow Three Little Maids crept in on the acts!

Our October Meeting was altered unavoidably, but we were given a professional and emotional talk by Beth Webb, a competent speaker, and very caring Children's Home worker with 38 years of experience. October Supper Club was a hands on activity, with Sue showing

us the art of creating Christmas trees using beads, accompanied by Village Shop hot pork sandwiches. Next one will be our annual Christmas Party.

Two of our members really enjoyed their day at the Derbyshire Autumn meeting, and viewed our embroidered brick, one of many forming a centenary wall for Derbyshire Federation's Centenary. On the same day, we held our now famous Coffee Morning which offered various lovely stalls, a sell-out tombola, and gorgeous raffle prizes. Funds raised will go towards WI activities and all the exciting plans we have in place for our own 2019 Centenary. It can now be revealed that next Autumn our Centenary Research Group and light comedy performances will jointly create two evenings of special entertainment for you in the Village Hall.

There will shortly be an outing to the Stockport Hat Museum on November 15th. Christmas frolics are not far away either. Next WI meeting is on Tuesday November 13th – a lively night of Line Dancing starting at 7.30pm in the Village Hall.

Liz Hickman



Church Farm Diary, November 2018

More silage has been made because of the nice weather. The quality is not as good as summer crops, but it will all help to feed the cattle this winter. The milk cows are still enjoying being out in the fields, but as soon as a drop of rain comes they head straight for the building.

With Brexit looming, farmers all over Britain are getting worried at the outcome, especially sheep farmers who will have their lambs to sell around the decision date. I have been reading an article in the farming paper about New Zealand, where it states that we in Britain consume about 70% of their meat. Both countries have a land area of about 225,000sq km, but the UK has a much higher proportion of urban citizens, with many enjoying the countryside and this brings its own challenges such as gates being left open and dog attacks (one of our local farmers has had a lamb attacked by a dog in the last few days – completely tearing out its throat).

Differences in standards in New Zealand to here include the handling of casualty stock. When animals die we have to pay for the disposal via the National Fallen Stock Company or similar. NZ still buries dead animals, so pollution levels and costs differ.

Vets are often used to do caesarean operations, even though we know it does not make sense financially. We try to save lives and NZ quickly cuts losses by shooting or cutting throats.

Marjorie Shimwell

Recipe of the month:

Chicken Tikka Masala

Ingredients

Vegetable oil

4 Chicken breasts

250g basmati rice

1 tsp turmeric or curry powder

1 bunch spring onions

2cm fresh ginger

2 garlic cloves

350ml single cream or natural yoghurt

200g tomato puree

4 tbsp gram masala

1 tbsp paprika

2 tsp English mustard powder

Salt and black pepper

Method

Put the kettle on to boil.

Drizzle some oil into a large frying pan and place on a medium to high heat. Cut the chicken breasts into bite-size chunks and fry for 5mins, tossing from time to time until brown all over.

Tip the rice into a medium pan and add the turmeric or curry powder. Pour over enough boiled water to come about 2cm above the rice.

Cover with the lid and return to the boil. Then reduce the heat to low and leave to cook for as long as it says on the packet.

While this is cooking give the chicken a little toss and then trim and finely slice the spring onions, both green and white bits, peel and grate the ginger and peel and chop the garlic. Add all three to the chicken and the cream and then add all the other ingredients stirring all the time. Bring to the boil and let it simmer for a few mins. If the sauce gets too thick add a little water. Taste and add seasoning if needed then serve with the rice.

Marjorie



Centenary Memorial – thank you

Dear Editor

Two months after the completion and dedication of Youlgrave's Stained Glass Memorial and I am still marvelling over the success of the project which took over our lives this year.

Holidaying in Youlgreave last Christmas, my wife Janet spotted a poster asking for Stained Glass volunteers. My eternal thanks to the project leaders, Judith Orchard, and John and Anne Cooper, who invited me to join the group and the dedication of the volunteers, Jeremy Hewitt, Dorothy Johnson, Mary and John Turner, Pam Walker and Irene Shimwell, who made the project an overwhelming success.

The thought and planning that went before the project by so many in this unusual, vibrant community were the key to its success; to be a part of the making was a humbling privilege. To see the final result of Phil Smith's original conceptual design, Judith's stained glass designs bringing everything together from all of the children's

ideas and the historic inputs - to the point when the fantastic woodwork/carving produced by Martin Hill and the stone memorials produced from the original quarry came together in Youlgrave.

The display in All Saints Church with positive feedback from the hundreds of visitors, the two very moving 'Blessing' Services given by Rev Louise and then installation in Ypres' magnificent cathedral have been a very emotional conclusion. I thank all those who I worked with for their inspiration, friendship and hard work and for giving me the opportunity to work on such a historic project.

Thanks to all those who supported us by visiting the workshops and giving encouragement during the 'making' and the Village Hall Ladies who made endless cups of tea/coffee deserve a huge mention.

Last but not least, a HUGE thank you to the families and friends who supported us during the project.

Thanks to ALL,

Frank M Price

Stained Glass Project Member

YOULGRAVE GARAGE

Tel.01629636943

Service & Repairs	MOT Testing	Diagnostics
Air Conditioning	Batteries	Brakes
Exhausts	Tyres	Accident Repairs
Petrol & Diesel	Paraffin	Logs & Sticks

Approved Garages Member
Approved Motor Industry Codes of Practise
www.youlgravegarage.co.uk

100 years ago: NEWS FROM THE HOME FRONT

Armistice – a stopping of hostilities by common agreement of the opposing sides: a truce. (Interestingly, in our dictionary it is listed opposite Armageddon – a bloody battle or struggle on a huge scale.)

“11/11/18 Armistice signed, hostilities ceased at 11.00 hrs.”

This is how the war diary of 1/6th Battalion Sherwood Foresters simply recorded the events of Monday 11th November 1918. Many men of this parish served in the Sherwood Foresters, in particular the 1/6, 1/8 and 1/16th Battalions. The 1/6 and 1/8 being engaged in fighting right up to 6th November. On 19th December it was announced that Lt. Col. B. W. Vann of the 1/6 and 1/8 had been awarded the ‘Victoria Cross for most conspicuous bravery, devotion to duty and fine leadership during the attack at Bellenglise and Lehaucourt on Sept. 29th.’ This battle was where Private Isaac Evans was killed – the last Youlgreave man to fall during the actual War.

From 1st to 11th November the Allies continued to advance on the Western Front against decreasing, yet still formidable opposition.

6th November – The Germans pressed for an Armistice and the Allied Government informed Berlin by wireless that Marshall Foch was able to receive representation of the German Government and the terms of the Armistice would be granted.

Night of 7/8th November – The German Armistice Delegation crossed the front line.

9th November – A Republic was proclaimed for the whole of Germany and early on 10th Kaiser Wilhelm II

crossed the frontier at Eysden into Holland. On the 28th he signed an Act of Abdication.

Monday 11th November – The Armistice was signed at 5.05am to come into effect at 11am that day.

Centenary Display

As we mark the centenary of the signing of the Armistice The Youlgreave 1914-1918 Community Group will be putting on a display in All Saints’ Church, Youlgreave from Thursday 8th to Tuesday 13th November from 10am to 4pm each day.

As well as the Royal British Legion Remembrance Service at 10.30am on Sunday 11th November, other features being planned during that time include film shows, a talk on the creation of the stained glass memorial, music, a talk on the Youlgreave soldiers - exact times to be confirmed.

If you could loan artefacts from the period we would like to hear from you. Please contact us on 630282.

Armistice Day Services

Friday 9th November at 10.45am at All Saints’ Church, Youlgreave. There will be a short Remembrance Service with contributions from the children of Youlgreave All Saints’ C of E Primary School. The Royal British Legion will also be present and everyone is welcome to attend.

Centenary Remembrance Service, Sunday 11th November 10.30am at All Saints’ Church, Youlgreave

The Royal British Legion will be holding their annual Remembrance Sunday Service. This will be a special combined service for Birchover, Stanton-in-Peak, Middleton-by-Youlgreave and Youlgreave.

In addition there will be short services at:

Stanton-in-Peak War Memorial at 9.15 am

Birchover War Memorial at 2.30pm

Middleton-by-Youlgreave War Memorial in church at 6.30 pm

As always, all parishioners and visitors will be welcomed.

Centenary Quarter Peal of Bells at 7pm at All Saints' Youlgreave to commemorate cessation of hostilities.

"We Will Remember Them"

BBC Media: At the time of going to press we have not yet received confirmation of when BBC East Midlands will be broadcasting our Centenary Stained Glass Memorial feature. Presenter Matthew Barlow has indicated it will be during the week up to 11th November and there will also be a broadcast on Radio Derby one morning in that same week. We will try to update noticeboards etc. as soon as we have more information.

*Anne & John Cooper
The Youlgreave 1914-1918
Community Group*

Peak Performance Choir Presents;

A Journey Through Song

Musical Director; Nick Stacey

"A voyage through the most memorable musicals of all time".



Friday, 16th November 2018 7.30pm
All Saints' Church, Youlgreave

Tickets; £7.00 Available on the door

**This current issue of the Bugle
and all the recent back issues are
available at:**

www.youlgreave.org.uk

Copy deadline for the December/
January joint issue is Wed 28th
November. Full contact details on
page 27.

AUTUMN LEAVES

**An evening of excellent MUSIC, POETRY and FOOD
with the dynamic WYNS TOR SINGERS**

Bar and Raffle

Including a three course meal

On Saturday 24 November in the Burton Institute, Winster,
7.30pm, bar open at 7pm

TICKETS £12 from Winster Post Office or 01629 650718

This is a charity event to support the Monterubbiano twinning
visit to Winster in 2019

Granby House, Youlgrave

**Do you live on your own and feel the
need for more company and support,
but don't want a care home?**



At Granby House you can be as independent as you want. You can eat meals cooked by the staff, go on the many social events and treat your en-suite room as you would your own home. All rooms are connected to an alarm system and help can be summoned at any time of day or night.

If more assistance is needed, home help can be arranged. Financial support is available in the same way as it is in a private house. The weekly costs can be surprisingly modest.

If you are interested in hearing more about Granby House, please ring Pat Cleaver on 01629 636836 or email granbyhouse@gmail.com.

Care For Feet Podiatry Foot Clinic



(Trading Upstairs Loughran Hague Salon)

Matlock Street, Bakewell, DE45 1EE

Tel: 01629 259672

www.careforfeetuk.co.uk

Home Visits Available



www.hcpc-uk.org



BAKEWELL OSTEOPATHY CLINIC

The conditions we can help you with include:

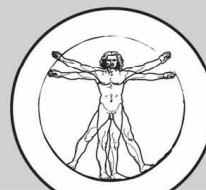
- HEADACHES & MIGRAINES
- NECK PAIN & WHIPLASH
- FROZEN OR STIFF SHOULDERS
- TENNIS ELBOW • SLIPPED DISCS
- REPETITIVE STRAIN INJURIES
- TRAPPED NERVES • LOWER BACK PAIN
- HIP, THIGH OR KNEE PROBLEMS
- POSTURAL CHANGES DURING PREGNANCY
- CHRONIC FATIGUE SYNDROME (ME)

The clinic is also a multi-disciplinary clinic and we offer the following therapies:

- OSTEOPATHY
- SPORTS MASSAGE
- HOMEOPATHY
- ALEXANDER TECHNIQUE
- NUTRITIONAL THERAPY
- HYPNOTHERAPY
- REFLEXOLOGY
- REIKI

CLINIC HOURS AND HOME VISTS:

The Bakewell Osteopathy Clinic is open each week day from 9.00am to 6.30pm (except Wednesdays) and every other Saturday from 9.00am to 2.00pm. We can also arrange home visits by special request.



BAKEWELL
OSTEOPATHY
CLINIC



www.bakewellosteopathy.co.uk

CALL PHIL HELER:

01629 329009 | 07980 930755

7B Buxton Road, Bakewell, DE45 1DA



Village Diary: regular events



Dates or times may be subject to change, so please check with the organiser/venue.

Mon	Monday Club	Village Hall	10am-3pm
	WI Craft Group	Village Hall	2-4pm (1st/3rd Mon)
	Pommie Patchworkers	Village Hall	1-4pm (2nd/4th Mon)
	Stained Glass Group	Village Hall (carpentry room)	7-9.30pm
Tues	Pilates Movement	Village Hall	10.30-11.30am
	Zumba	Village Hall	1.30-2.30pm
	Parish Council meeting	Village Hall	7.15pm (3rd Tues)
	Bell Ringers' practice	All Saints Church	7.30-9.30pm
	Youlgrave Women's Institute	Village Hall	7.30pm (2nd Tues)
	Yoga with Iris Pimm (general class)	The Barn, Greenfields, Alport	7-9pm
Wed	Confidential advice sessions with Citizens Advice Bureau	Youlgrave Surgery	9.30-12.30am
	Tai Chi Chuan	Methodist Chapel (social room)	10-11am
	Diane Kettle's Art Class	Reading Room	10am-12 noon
	Coffee Morning	Wesleyan Reform Chapel	10am-12 noon (3rd Wed)
	Pilates	Village Hall	5.30-7.15pm
	Bingo – all welcome!	Reading Room	7pm
Thurs	Yoga with Iris Pimm (general class)	The Barn, Greenfields, Alport	9.30-11.30am
	Diane Kettle's Art Class	Reading Room	2-4pm
	Rainbows, Brownies & Guides	Scout & Community Youth Hall, Edwina 636491 Penny 636125	Term time only
	Yoga with Iris Pimm (beginners' class)	The Barn, Greenfields, Alport	7-8.30pm
	Salsa Dance Class	Village Hall	7.30-9.30pm
	Youlgrave Silver Band	Methodist Chapel (social room)	7.30-9.30pm (learners 7pm)
Fri	Mobile Library	Holywell Lane	3.15-3.30pm
		Grove Place	3.30-4pm (2nd Fri)
	Youlgrave Cinema	Village Hall	See Bugle notices

ANNUAL BUSINESS/PROFESSIONAL SPONSORS: Personal Services

Aloe Vera For You

Your local agent for Forever Living Products (Aloe Vera & Beehive), 07855 856948, lisabingham123@btinternet.com

Jo Copeland, Mobile Professional Hairdresser

Precision cutting, colouring, perming and styling, 07711 255004

Diane Kettle, Art classes in Youlgrave

Drawing & painting, personal tuition in artist's Middleton studio, 636763, www.dianekettle.com

Judith Orchard, Clothes alterations and beekeeping/swarms, 630202

Graham Elliott, Derbyshire Dales District Councillor, 636943/636318

Iris Pimm, Yoga

The Barn, Greenfields, Alport, 07890 381155 (see Village Diary, page 25)

Kathi Roche, Woodwind instrument repairs

636179, kathirepairs@hotmail.co.uk

Tropic Skincare, natural vegan-friendly skincare products, 077451 48993, leah_brin@hotmail.com, www.tropicskincare.co.uk/shop/ leahgoodwin

LOCAL COMMUNITY GROUPS & ORGANISATIONS – SPONSORS

Bradford River Action Group, 636189
Granby House, Housing for older people, 636123

Middleton & Smerrill Parish Council
parishclerk@middletonbyyoulgrave.org.uk, 636151

Youlgrave 1914-1918 Community Group, 630282

Youlgrave Badminton Group, Thursdays 10-12 noon at the Village Hall, contact John Youatt 636241

Youlgrave Bellringers, contact David Camm, 636576

Youlgrave Bowls Club, contact Sharon Sansom, 636712

Youlgrave Cinema, 636836

Youlgrave Community Land Trust, 636586

Youlgrave Day Centre (Monday Club) at

the Village Hall, 10am-3pm, contact Shirley Brassington, 636310

Youlgrave Methodist Church, 636558

Youlgrave Parish Church, 636576

Youlgrave Parish Council, 636151
youlgraveclerk@youlgrave.org.uk

Youlgrave Preschool, 07794 257531

Youlgrave Reading Room, 636477

Youlgrave Scout & Community Youth Hall, 636887

Youlgrave Silver Band, Thursdays 7.30pm Methodist Hall, Learners 7pm, 630202

Youlgrave Village Hall, 01629 828215, enquiries@yvh.org.uk, www.yvh.org.uk

Youlgrave Welldressers, 636341

Youlgrave Women's Institute, 636734

Youlgrave Wesleyan Reform Chapel, 636251



Andrew McCloy (Editor), Englemere, Brookleton, Youlgrave, Derbyshire DE45 1UT tel 01629 636125
e-mail andrew.mccloy@btinternet.com

www.thebugle.org.uk (past & special issues) www.youlgrave.org.uk (current issues)

Printed by Ashover Print, Ashover Business Centre, Matlock Road, Kelstedge, Derbyshire S45 0DX (tel 01246 592012).

The views in this publication are not necessarily those of the editorial team.

ANNUAL SPONSORS: BUSINESSES & TRADERS/PROFESSIONALS

Pubs & Accommodation

Apple Tree Cottage

1 double bedroom self-catering, accommodation on Main Street.
www.holidaylettings.co.uk/rentals/youlgreave/271801

Bull's Head Hotel

Fountain Square,
Youlgrave, 636307
bullsheadyoulgrave@gmail.com
www.thebullsheadyoulgrave.co.uk/

Farmyard Inn

Main Street, Youlgrave,
636221, enquiries@farmyardinn.co.uk
www.farmyardinn.co.uk/

George Hotel

Alport Lane, Youlgrave
636292

Smerrill Grange

Bed & Breakfast, 636232
alisonyates267@hotmail.co.uk

The Old Bakery

B&B and self-catering accommodation
Church Street,
Youlgrave, 630005,
kenclayton@mail.com
www.theoldbakeryyoulgrave.co.uk/

Hopping Farm

Caravan Site, Mrs M.
Frost, 636302

Peak Pods

En-suite glamping pods, Alport, 636874,
www.peakpods.com

Pumpkin Cottage

2-bed cottage in
Youlgrave, 07787
553162
contact@pumpkincottage.com,
www.pumpkincottage.com

Building and Interior Services & Supplies

JDB Plumbing & Heating

James Bacon 07866 365610

Mather Glazing Repairs & Locks

Nathan Mather 07487 739014
mathersglazingandlocks@outlook.com

Michael Arthur

Supply, design and project manage installations of kitchens, bedrooms and bathrooms, 01629 258090
www.michaelarthur.co.uk

Derbyshire Aggregates

636500
www.decorativeaggregates.com

Long Rake Spar Co

Large selection of decorative stone for all your garden projects, 636210
www.longrakespar.co.uk

T. Nutt & Sons

supply and fit carpets, vinyl, wood, laminate and karndean, 01246 863148, www.nutt.co.uk

Shops, Cafes & Home Delivery

Amy's Dairy

Delivery of fresh milk, free range, eggs, cream and fruit juices on your doorstep, 636639 & 07799 880740

Peak Feast

Bakers of delicious cakes, pies and treats, The Workshop, Moor Lane, Youlgrave, 630000,
www.peakfeast.co.uk

Youlgrave Village Shop & Tearooms

630208, www.youlgrave.shop

Youngs of Youlgrave

Post Office & General Store, 636217

Driving & Motoring

Anne Hunt Driving School

Beginners, Refresher courses, Pass Plus, 636162

Twyford Garage

Arbor Low, Youlgrave, 636093

Youlgrave Garage

Motor engineers and MOT Test Station, 636943

Vintage Adventure Tours

Unique vintage car tours of the Peak beautiful District, 650005,
www.vintageadventuretours.co.uk

Personal Services - *see inside back page*